

# **Strathmerton Primary School (2790)**

---

## 2008 School Level Report

---

---

Please check the data in this report. If, after comparing it with your own records, you deem it to be incorrect or incomplete, follow the directions on the following website:

- <http://www.education.vic.gov.au/management/schoolimprovement/performance/performancedata/>  
then select 'School Performance Reports'.

---

---

# Contents

---

	<b>Page No.</b>
Privacy	3
SFO Density and LBOTE	4
Assessment of Reading Prep to Year 2	5-6
Teacher Judgments against the VELs	7-15
NAPLAN - Reading	16
- Writing	17
- Numeracy	18
AIM - Reading	19
- Mathematics	20
Teacher Assessment of Student Progress (PSD students)	21-22
Enrolment	23
Student Absence	24
Opinion Surveys - Parent	25
- Staff	26
Performance & Development Culture	27
Staff Sick Leave	28
Teaching Staff Retention	29
Bank Balances	30

## Privacy

---

When reporting on the school's performance to the school community, care must be taken to avoid the disclosure of information that can directly or indirectly identify an individual. This may be a particular issue when reporting on the achievement of specific cohorts of students or the opinions of staff where there are small numbers.

In situations where privacy cannot be assured, schools may wish to report on the mean result or provide a written comment on school, year level or cohort performance.

Where the School Level Report is provided to school council members as part of any annual reporting process, or used for discussion on a school's performance, such as in consultation with the school community in the school self-evaluation process, it is important to remind school community members of their duty to only use this information for the purpose it was provided, and that the material must be kept confidential.

It is important to note that information that identifies an individual or can be used with other readily available information to identify a person is now protected by the *Information Privacy Act 2000* (<http://www.education.vic.gov.au/about/deptpolicies/informationprivacy.htm>).

---

# SFO Density and LBOTE

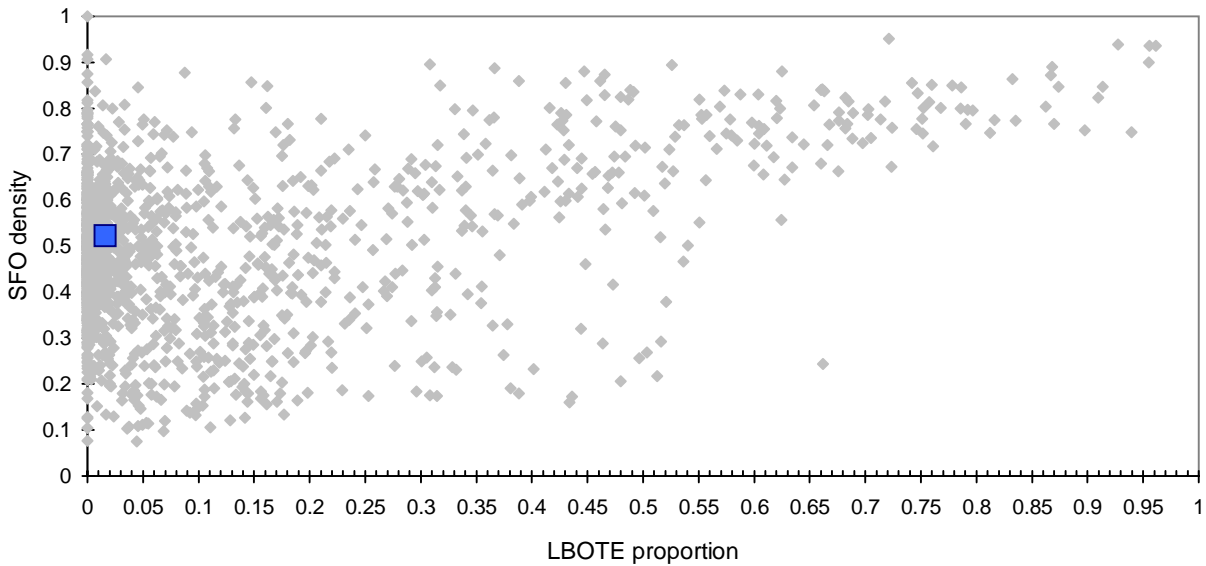
School no: 2790

School name: Strathmerton Primary School

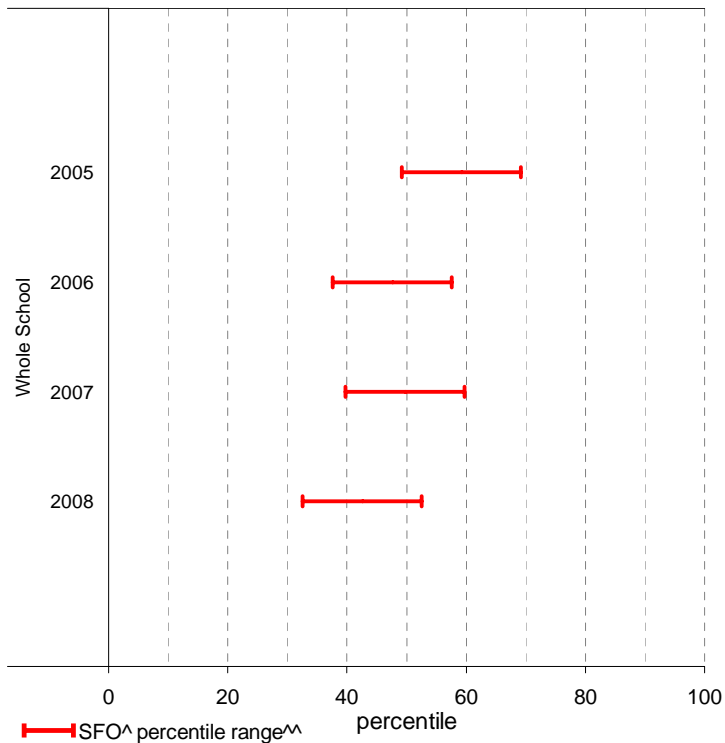
Explanation: The chart below plots the school's 2008 SFO (Student Family Occupation) density<sup>^</sup> and LBOTE (Language Background Other Than English) proportion\* against that of all government schools. This school is highlighted as a square on the chart.

	2001	2002	2003	2004	2005	2006	2007	2008
SFO density <sup>^</sup> :					0.44	0.48	0.49	0.52
LBOTE proportion*:	0.03	0.03	0.03	0.00	0.00	0.00	0.00	0.02

School's 2008 SFO density and LBOTE proportion against that of all government schools



School's SFO<sup>^</sup> percentile range<sup>^^</sup> over time



Notes: <sup>^</sup> The higher the SFO density, the lower the SFO percentile and the lower the socio-economic status (SES).  
<sup>^^</sup> The school's SFO percentile range shows the 20% of schools with an SFO Density most like this school.  
 \* From 2007, a student is LBOTE if either the student or one parent/guardian speaks a language other than English at home. Prior to 2007, a student is LBOTE if the student or one of the parents was born in a non-English speaking country.

## Assessment of Reading: Prep to Year 2

School no: 2790

School name: Strathmerton Primary School

Explanation: Students' ability to read unsighted text is assessed at the end of each year. The data presented here includes 'deemed not capable' students.

More detailed information (including data where deemed not capable students are excluded) is available in the Assessment of Reading report, available from the School Performance Reports website.

Source of data: Data transmitted from school to DEECD via an online web-form.

	Prep								Year 1								Year 2																	
	School							State	School							State	School							State										
	2004	2005	2006	2007	2008	2008	2004	2005	2006	2007	2008	2008	2004	2005	2006	2007	2008	2008																
(No.)	%	(No.)	%	(No.)	%	(No.)	%	(No.)	%	(No.)	%	(No.)	%	(No.)	%	(No.)	%	(No.)	%	(No.)	%	(No.)	%											
<b>Level 1</b>																																		
100%	(16)	66.7	(10)	50.0	(7)	53.8	(5)	41.7	(11)	73.3	69.0	(17)	100.0	(22)	91.7	(19)	86.4	(12)	100.0	(9)	100.0	94.7												
90-99%	(8)	33.3	(10)	50.0	(6)	46.2	(7)	58.3	(4)	26.7	25.4			(2)	8.3	(3)	13.6					4.7												
80-89%											2.3												0.2											
51-79%											1.5												0.2											
50% or below											1.7												0.3											
Total	(24)	100.0	(20)	100.0	(13)	100.0	(12)	100.0	(15)	100.0	100.0	(17)	100.0	(24)	100.0	(22)	100.0	(12)	100.0	(9)	100.0	100.0												
<b>Subtotal 90-100%</b>	<b>(24)</b>	<b>100.0</b>	<b>(20)</b>	<b>100.0</b>	<b>(13)</b>	<b>100.0</b>	<b>(12)</b>	<b>100.0</b>	<b>(15)</b>	<b>100.0</b>	<b>94.5</b>	<b>(17)</b>	<b>100.0</b>	<b>(24)</b>	<b>100.0</b>	<b>(22)</b>	<b>100.0</b>	<b>(12)</b>	<b>100.0</b>	<b>(9)</b>	<b>100.0</b>	<b>99.4</b>												
<b>Level 5</b>																																		
100%	(9)	37.5	(6)	30.0	(3)	23.1	(4)	33.3	(9)	60.0	45.3	(8)	47.1	(15)	62.5	(10)	45.5	(9)	75.0	(9)	100.0	81.0	(10)	66.7	(14)	82.4	(22)	88.0	(16)	76.2	(14)	100.0	90.4	
90-99%	(11)	45.8	(10)	50.0	(7)	53.8	(5)	41.7	(4)	26.7	36.1	(9)	52.9	(9)	37.5	(12)	54.5	(3)	25.0			16.9	(5)	33.3	(3)	17.6	(3)	12.0	(4)	19.0	8.8			
80-89%	(1)	4.2	(2)	10.0	(1)	7.7					5.2											0.8												
51-79%	(1)	4.2	(2)	10.0	(1)	7.7	(2)	16.7	(1)	6.7	3.6											0.4												
50% or below	(2)	8.3			(1)	7.7	(1)	8.3	(1)	6.7	9.8											1.0						(1)	4.8	0.4				
Total	(24)	100.0	(20)	100.0	(13)	100.0	(12)	100.0	(15)	100.0	100.0	(17)	100.0	(24)	100.0	(22)	100.0	(12)	100.0	(9)	100.0	100.0	(15)	100.0	(17)	100.0	(25)	100.0	(21)	100.0	(14)	100.0	100.0	
<b>Subtotal 90-100%</b>	<b>(20)</b>	<b>83.3</b>	<b>(16)</b>	<b>80.0</b>	<b>(10)</b>	<b>76.9</b>	<b>(9)</b>	<b>75.0</b>	<b>(13)</b>	<b>86.7</b>	<b>81.3</b>	<b>(17)</b>	<b>100.0</b>	<b>(24)</b>	<b>100.0</b>	<b>(22)</b>	<b>100.0</b>	<b>(12)</b>	<b>100.0</b>	<b>(9)</b>	<b>100.0</b>	<b>97.9</b>	<b>(15)</b>	<b>100.0</b>	<b>(17)</b>	<b>100.0</b>	<b>(25)</b>	<b>100.0</b>	<b>(20)</b>	<b>95.2</b>	<b>(14)</b>	<b>100.0</b>	<b>99.2</b>	
<b>Level 15</b>																																		
100%											(3)	17.6	(4)	16.7	(1)	4.5	(3)	25.0	(7)	77.8			37.1	(6)	40.0	(5)	29.4	(12)	48.0	(7)	33.3	(9)	64.3	62.9
90-99%											(13)	76.5	(18)	75.0	(19)	86.4	(9)	75.0	(2)	22.2			49.2	(7)	46.7	(12)	70.6	(13)	52.0	(12)	57.1	(4)	28.6	33.2
80-89%											(1)	5.9	(1)	4.2	(2)	9.1					6.3	(1)	6.7							(1)	4.8	(1)	7.1	1.8
51-79%																						3.0												
50% or below													(1)	4.2								4.3	(1)	6.7						(1)	4.8		1.4	
Total											(17)	100.0	(24)	100.0	(22)	100.0	(12)	100.0	(9)	100.0	100.0	(15)	100.0	(17)	100.0	(25)	100.0	(21)	100.0	(14)	100.0	100.0		
<b>Subtotal 90-100%</b>											<b>(16)</b>	<b>94.1</b>	<b>(22)</b>	<b>91.7</b>	<b>(20)</b>	<b>90.9</b>	<b>(12)</b>	<b>100.0</b>	<b>(9)</b>	<b>100.0</b>	<b>86.4</b>	<b>(13)</b>	<b>86.7</b>	<b>(17)</b>	<b>100.0</b>	<b>(25)</b>	<b>100.0</b>	<b>(19)</b>	<b>90.5</b>	<b>(13)</b>	<b>92.9</b>	<b>96.1</b>		
<b>Level 20</b>																																		
100%																							(5)	33.3	(7)	41.2	(10)	40.0	(3)	14.3	(10)	71.4	47.4	
90-99%																							(8)	53.3	(10)	58.8	(14)	56.0	(16)	76.2	(3)	21.4	47.1	
80-89%																							(1)	6.7			(1)	4.0	(1)	4.8	(1)	7.1	2.4	
51-79%																																		
50% or below																							(1)	6.7						(1)	4.8		2.2	
Total											(15)	100.0	(17)	100.0	(25)	100.0	(21)	100.0	(14)	100.0	100.0	(13)	86.7	(17)	100.0	(24)	96.0	(19)	90.5	(13)	92.9	94.5		
<b>Subtotal 90-100%</b>											<b>(13)</b>	<b>86.7</b>	<b>(17)</b>	<b>100.0</b>	<b>(24)</b>	<b>96.0</b>	<b>(19)</b>	<b>90.5</b>	<b>(13)</b>	<b>92.9</b>	<b>94.5</b>													

	2004	2005	2006	2007	2008	2004	2005	2006	2007	2008	2004	2005	2006	2007	2008
No. of students DNC <sup>1</sup> :	0	0	0	0	0	0	0	0	0	0	0	0	0	1	0
No. of students at risk <sup>2</sup> :	0	0	0	0	0	0	0	0	0	0	2	0	0	2	1

- Notes:**
- Students can be DNC (deemed not capable) only if they meet one of the conditions (insufficient English, receiving D&I funding, insufficient attendance at the school or referred from Reading Recovery) AND read below the minimum standard.
  - The number of students at risk is the number of students reading at less than 90% accuracy at Level 1 for Prep, Level 5 for Year 1 or Level 15 for Year 2.

# Assessment of Reading: Prep to Year 2

School no: 2790

School name: Strathmerton Primary School

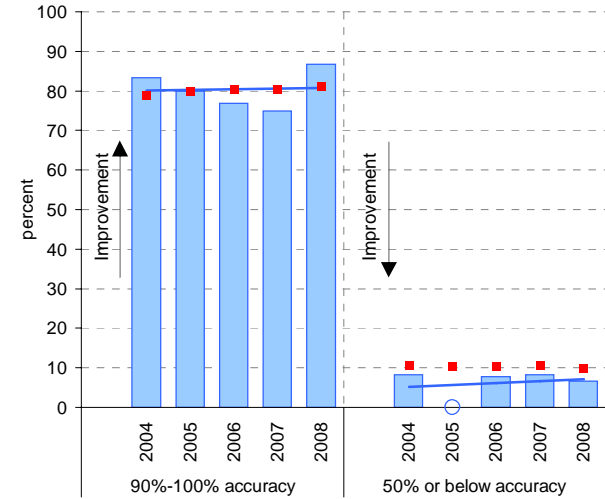
Explanation: Students' ability to read unsighted text is assessed at the end of each year.

Source of data: Data transmitted from school to DEECD via an online web-form.

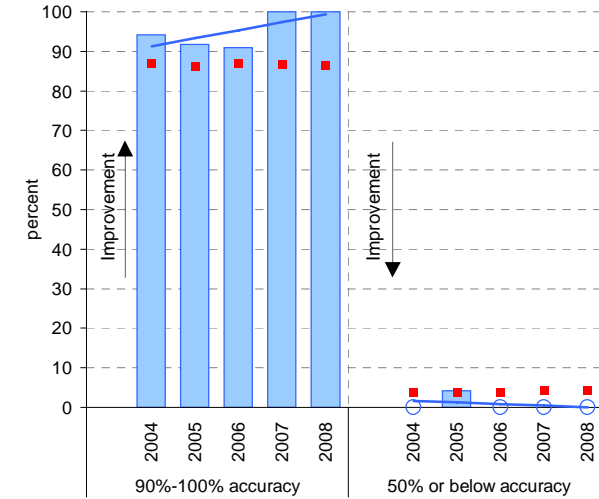
Notes: \* The school trendline is being trialled. It is only plotted when there is data for each calendar year.

^ This data is highly skewed, with a lot of schools obtaining the best possible result, particularly in Year 2. The maximum achievable percentile is therefore significantly less than 100.

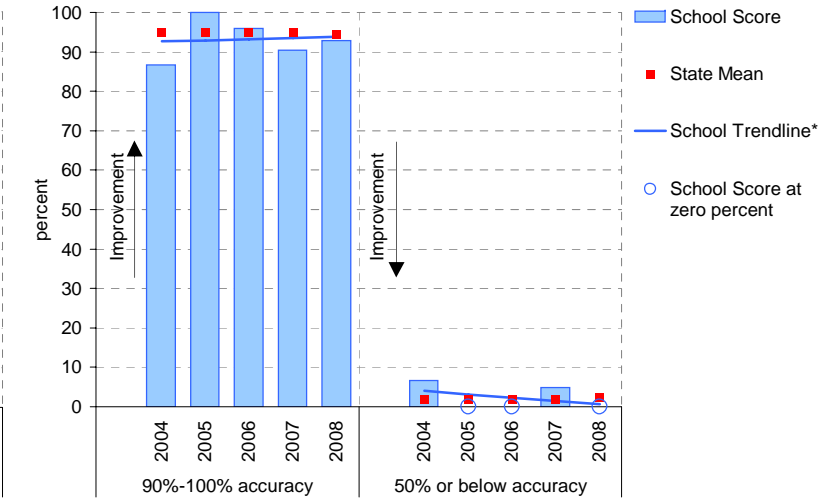
Year level: Prep  
Text level: Level 5



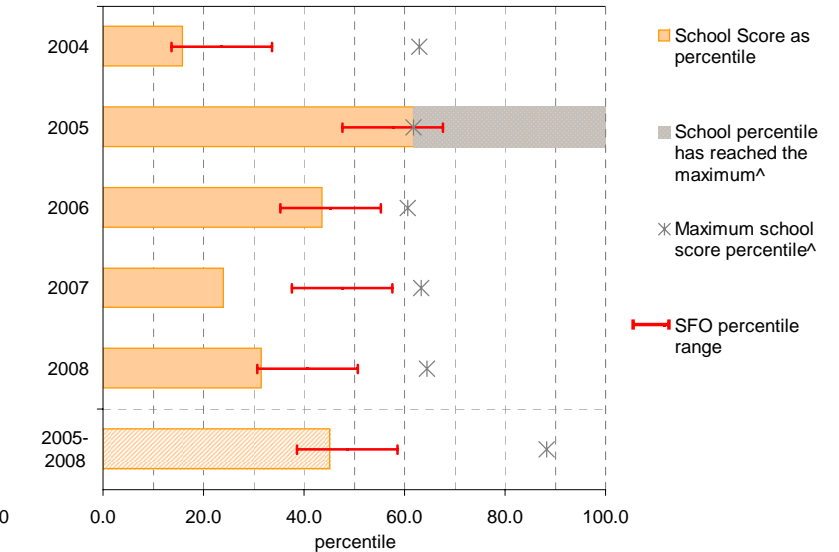
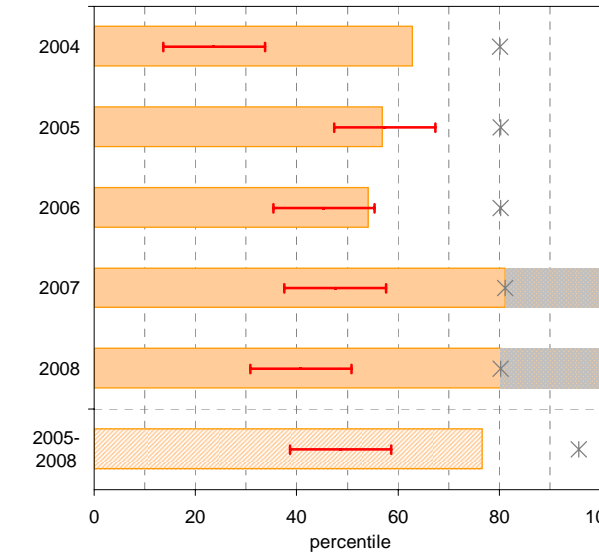
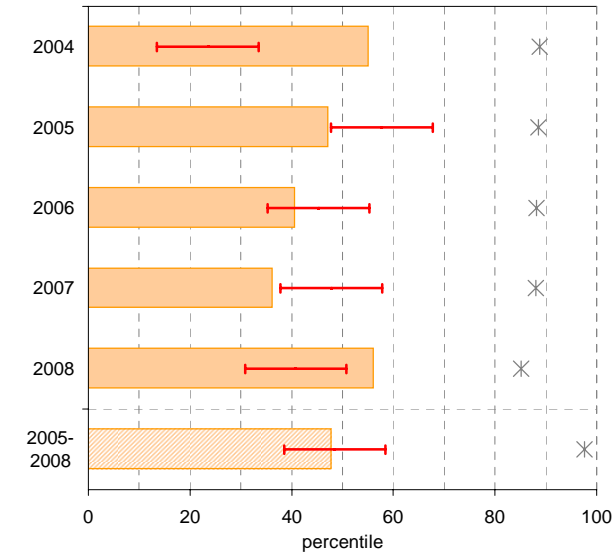
Year level: Year 1  
Text level: Level 15



Year level: Year 2  
Text level: Level 20



90%-100% accuracy as percentile against SFO percentile range



# Teacher Judgments against the VELS - Year levels Prep-6 combined

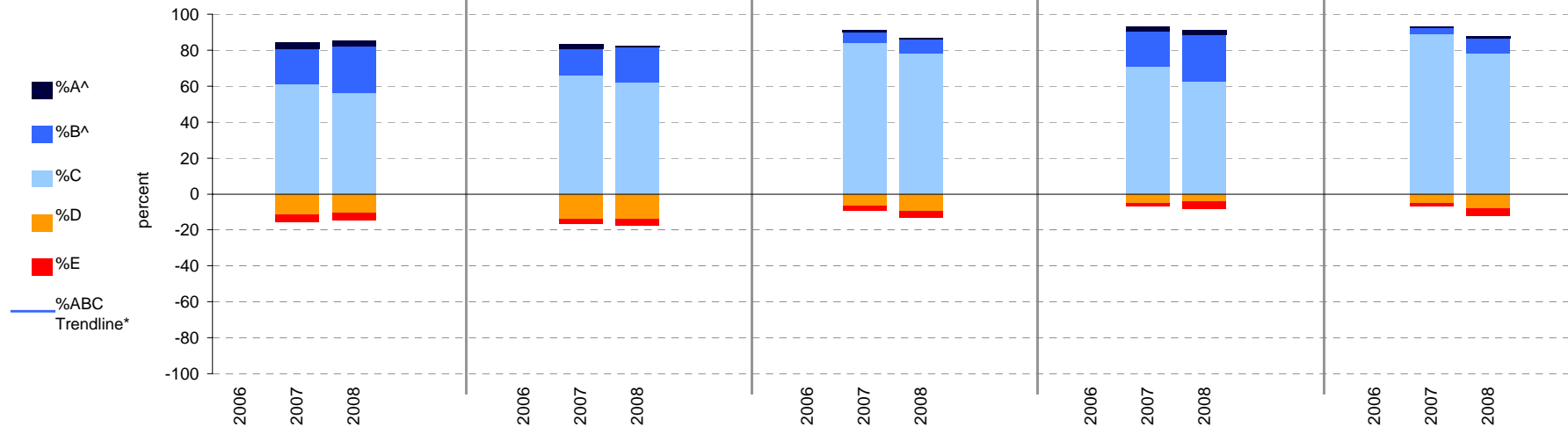
School no: 2790

School name: Strathmerton Primary School

Source of data: Data retrieved electronically from CASES21.

Explanation: Teacher judgments of student achievement against the VELS.

Year Levels:	Reading						Writing					Speaking & Listening					Number					Measurement, Chance & Data									
	total students	% A^	% B^	% C	% D	% E	total students	% A^	% B^	% C	% D	% E	total students	% A^	% B^	% C	% D	% E	total students	% A^	% B^	% C	% D	% E	total students	% A^	% B^	% C	% D	% E	
Prep-6 (combined)	2006						2006						2006						2006						2006						
	2007	121	3	20	61	12	4	121	2	15	66	14	2	120	1	6	84	7	3	117	3	20	71	5	2	118	1	3	89	5	2
	2008	115	3	26	57	10	4	115	1	20	62	14	3	115	1	8	78	10	3	115	3	26	63	4	4	115	1	9	78	8	4



Notes: \* The school trendline is only plotted when there is data for each calendar year.  
 ^ The cutoff between grades A and B changed in 2007. Further information is available on the following website:  
<http://www.education.vic.gov.au/studentlearning/studentreports/schools/whatsnew.htm>.

# Teacher Judgments against the VELS - English (primary)

School no: 2790

School name: Strathmerton Primary School

Source of data: Data retrieved electronically from CASES21.

Explanation: Teacher judgments of student achievement against the VELS.

Notes: \* The school trendline is only plotted when there is data for each calendar year.

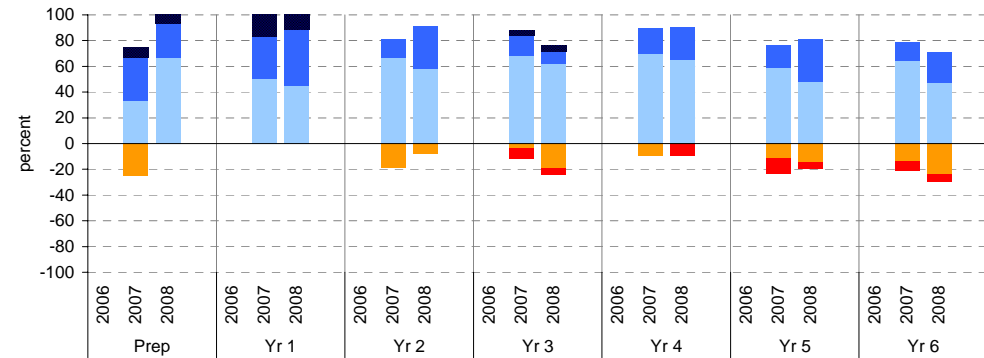
\*\* In 2006, approx. 850 schools assessed their students against the 0.25 VELS scale. 2006 benchmarks are therefore based on a subset of schools.

^ The cutoff between grades A and B changed in 2007. Further information is available on the following website: <http://www.education.vic.gov.au/studentlearning/studentreports/schools/whatsnew.htm>.

^^ 2008 benchmarks and percentiles will be calculated in August, when data from all schools has been submitted.

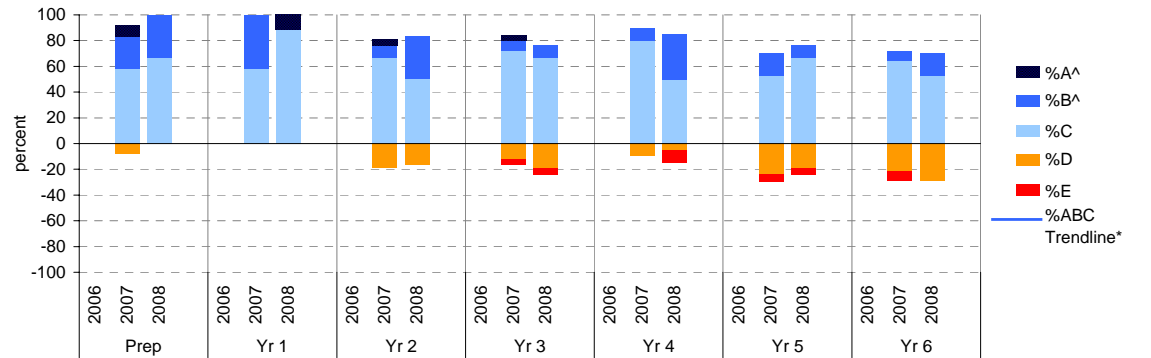
## Reading

	total students		% of students by grade					Mean Score	
	A^	B^	C	D	E	School	State**		
2006							1.01		
2007	12	8	33	33	25	0	0.90	1.01	
2008	15	7	27	67	0	0	0.97		
2006							1.57		
2007	12	17	33	50	0	0	1.67	1.57	
2008	9	11	44	44	0	0	1.67		
2006							2.04		
2007	21	0	14	67	19	0	1.89	2.06	
2008	12	0	33	58	8	0	1.96		
2006							2.49		
2007	25	4	16	68	4	8	2.46	2.50	
2008	21	5	10	62	19	5	2.36		



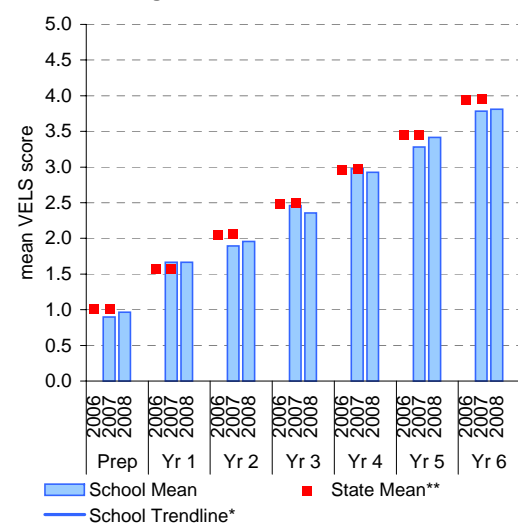
## Writing

	total students		% of students by grade					Mean Score	
	A^	B^	C	D	E	School	State**		
2006							0.97		
2007	12	8	25	58	8	0	0.92	0.97	
2008	15	0	33	67	0	0	0.92		
2006							1.47		
2007	12	0	42	58	0	0	1.60	1.49	
2008	9	11	0	89	0	0	1.47		
2006							1.95		
2007	21	5	10	67	19	0	1.88	1.96	
2008	12	0	33	50	17	0	1.92		
2006							2.42		
2007	25	4	8	72	12	4	2.35	2.43	
2008	21	0	10	67	19	5	2.29		

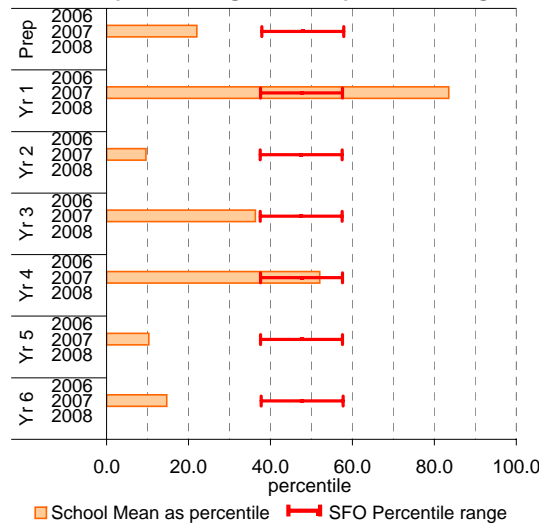


## Reading

School Mean against State Mean^^

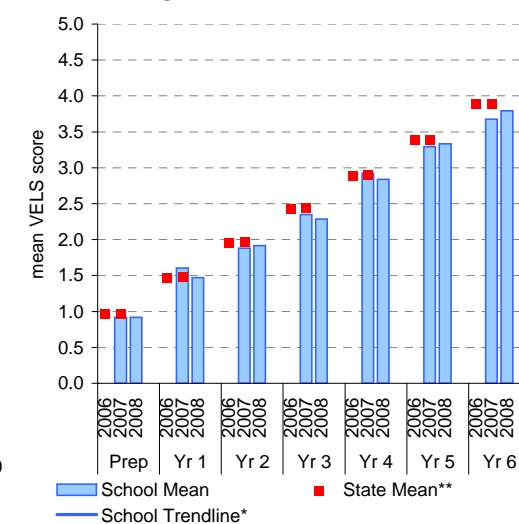


School Mean as percentile against SFO percentile range^^

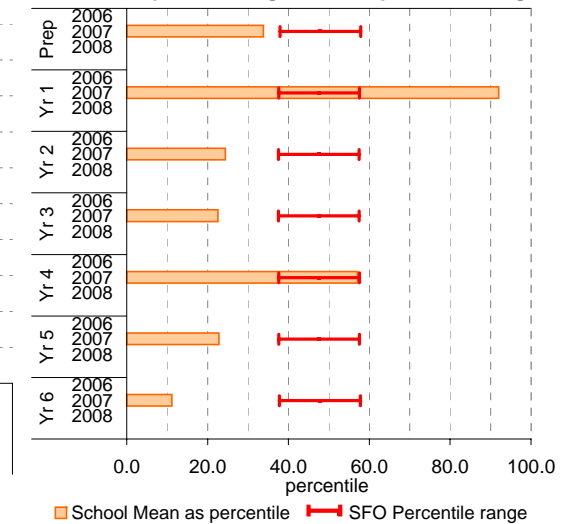


## Writing

School Mean against State Mean^^



School Mean as percentile against SFO percentile range^^



# Teacher Judgments against the VELS - English (primary)

School no: 2790

School name: Strathmerton Primary School

Source of data: Data retrieved electronically from CASES21.

Explanation: Teacher judgments of student achievement against the VELS.

Notes: \* The school trendline is only plotted when there is data for each calendar year.

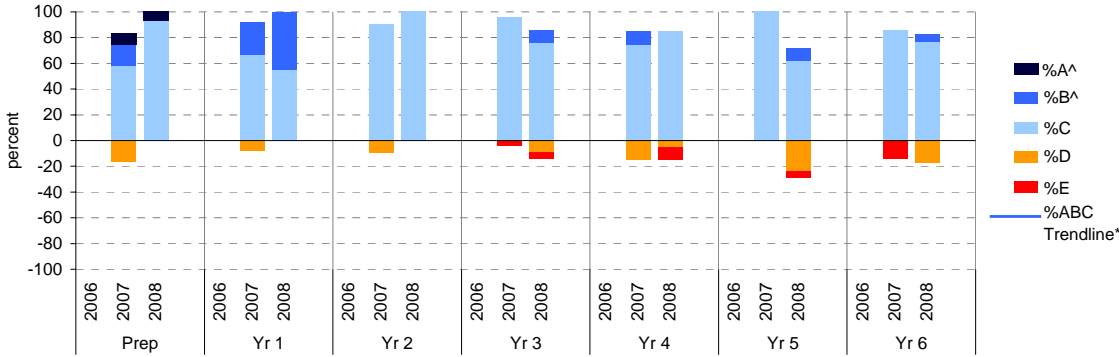
\*\* In 2006, approx. 850 schools assessed their students against the 0.25 VELS scale. 2006 benchmarks are therefore based on a subset of schools.

^ The cutoff between grades A and B changed in 2007. Further information is available on the following website: <http://www.education.vic.gov.au/studentlearning/studentreports/schools/whatsnew.htm>.

^^ 2008 benchmarks and percentiles will be calculated in August, when data from all schools has been submitted.

## Speaking and Listening

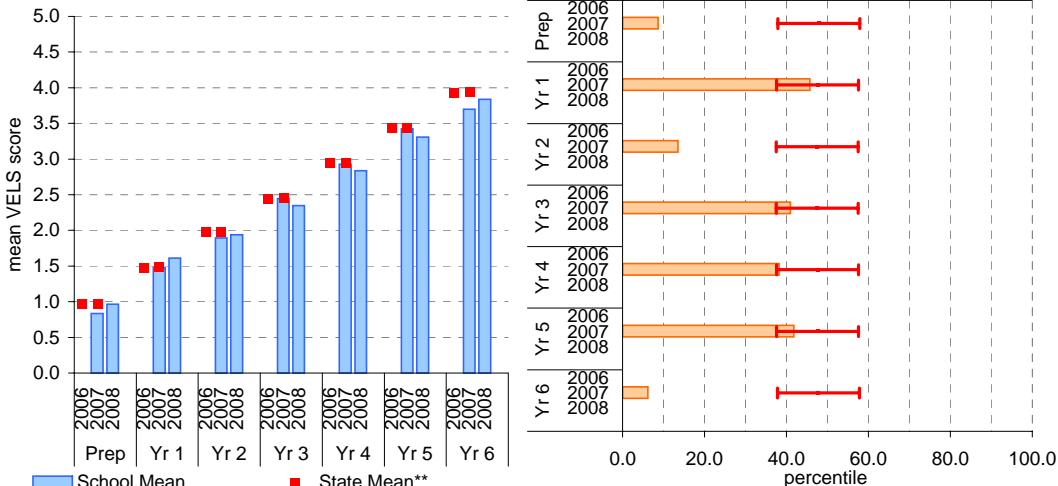
	total students	% of students by grade					Mean Score			total students	% of students by grade					Mean Score		
		A^	B^	C	D	E	School	State**			A^	B^	C	D	E	School	State**	
Prep	2006						0.97		2006						2.94			
	2007	12	8	17	58	17	0	0.83	0.97	2007	20	0	10	75	15	0	2.92	2.94
	2008	15	7	0	93	0	0	0.97		2008	20	0	0	85	5	10	2.84	
Yr 1	2006						1.48		2006								3.43	
	2007	12	0	25	67	8	0	1.48	1.48	2007	17	0	0	100	0	0	3.43	3.43
	2008	9	0	44	56	0	0	1.61		2008	21	0	10	62	24	5	3.31	
Yr 2	2006						1.98		2006								3.93	
	2007	21	0	0	90	10	0	1.89	1.98	2007	14	0	0	86	0	14	3.70	3.94
	2008	12	0	0	100	0	0	1.94		2008	17	0	6	76	18	0	3.84	
Yr 3	2006						2.45		2006								3.93	
	2007	24	0	0	96	0	4	2.45	2.46	2007								
	2008	21	0	10	76	10	5	2.35		2008								



## Speaking and Listening

School Mean against State Mean^^

School Mean as percentile against SFO percentile range^^



■ School Mean    ■ State Mean\*\*    ■ School Mean as percentile    — SFO Percentile range

# Teacher Judgments against the VELS - Mathematics (primary)

School no: 2790

School name: Strathmerton Primary School

Source of data: Data retrieved electronically from CASES21.

Explanation: Teacher judgments of student achievement against the VELS.

Notes: \* The school trendline is only plotted when there is data for each calendar year.

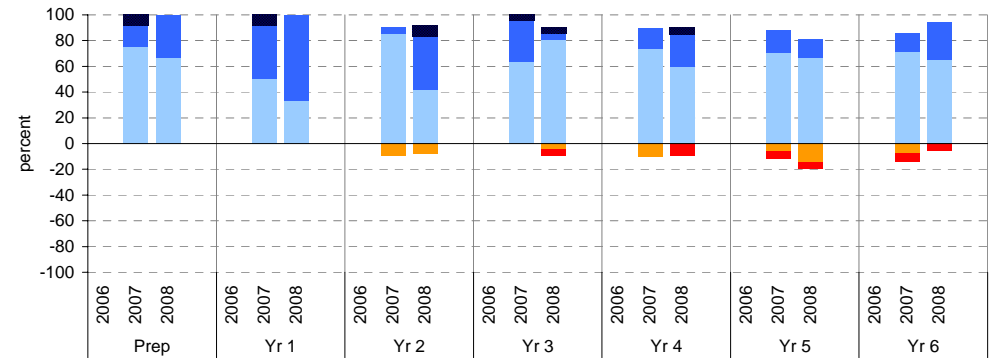
\*\* In 2006, approx. 850 schools assessed their students against the 0.25 VELS scale. 2006 benchmarks are therefore based on a subset of schools.

^ The cutoff between grades A and B changed in 2007. Further information is available on the following website: <http://www.education.vic.gov.au/studentlearning/studentreports/schools/whatsnew.htm>.

^^ 2008 benchmarks and percentiles will be calculated in August, when data from all schools has been submitted.

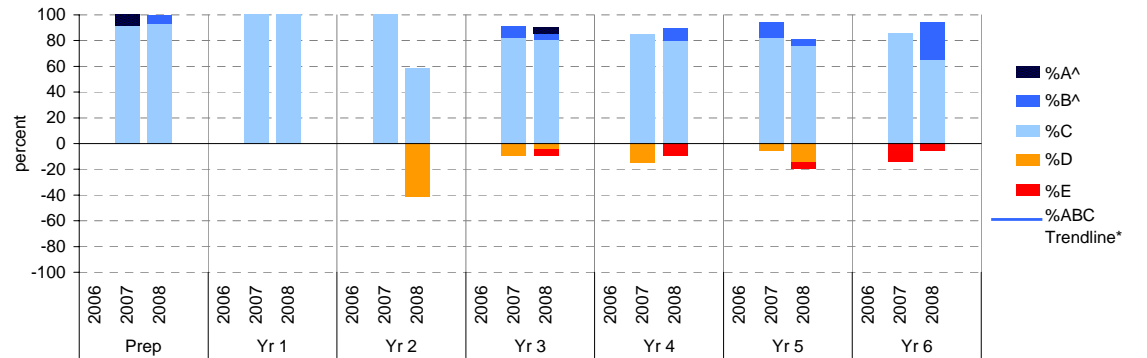
## Number

	total students		% of students by grade					Mean Score			total students		% of students by grade					Mean Score	
			A^	B^	C	D	E	School	State**				A^	B^	C	D	E	School	State**
Prep	2006							1.00	1.00	Yr 4	2006							2.95	2.95
	2007	12	8	17	75	0	0	1.00	1.00		2007	19	0	16	74	11	0	2.93	2.96
	2008	15	0	33	67	0	0	1.02			2008	20	5	25	60	0	10	2.90	
Yr 1	2006							1.51	1.51	Yr 5	2006							3.43	3.43
	2007	12	8	42	50	0	0	1.56	1.51		2007	17	0	18	71	6	6	3.41	3.44
	2008	9	0	67	33	0	0	1.67			2008	21	0	14	67	14	5	3.37	
Yr 2	2006							1.99	1.99	Yr 6	2006							3.93	3.93
	2007	21	0	5	86	10	0	1.83	1.99		2007	14	0	14	71	7	7	3.84	3.95
	2008	12	8	42	42	8	0	2.04			2008	17	0	29	65	0	6	3.94	
Yr 3	2006							2.46	2.46										
	2007	22	5	32	64	0	0	2.56	2.48										
	2008	21	5	5	81	5	5	2.40											



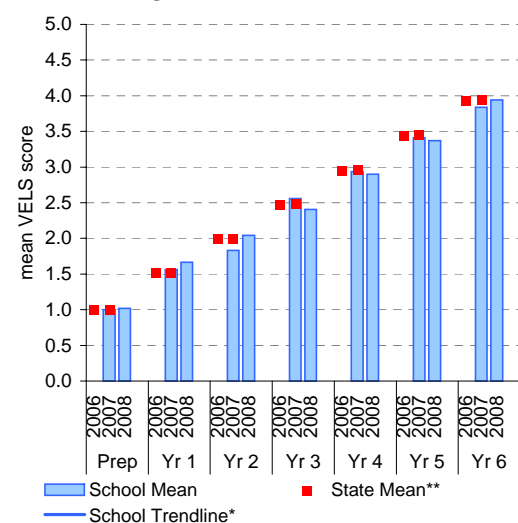
## Measurement, Chance and Data

	total students		% of students by grade					Mean Score			total students		% of students by grade					Mean Score	
			A^	B^	C	D	E	School	State**				A^	B^	C	D	E	School	State**
Prep	2006							0.97	0.97	Yr 4	2006							2.94	2.94
	2007	12	8	0	92	0	0	0.96	0.97		2007	20	0	0	85	15	0	2.90	2.95
	2008	15	0	7	93	0	0	0.98			2008	20	0	10	80	0	10	2.86	
Yr 1	2006							1.48	1.48	Yr 5	2006							3.42	3.42
	2007	12	0	0	100	0	0	1.50	1.49		2007	17	0	12	82	6	0	3.47	3.43
	2008	9	0	0	100	0	0	1.50			2008	21	0	5	76	14	5	3.32	
Yr 2	2006							1.97	1.97	Yr 6	2006							3.92	3.92
	2007	21	0	0	100	0	0	1.94	1.98		2007	14	0	0	86	0	14	3.77	3.93
	2008	12	0	0	58	42	0	1.69			2008	17	0	29	65	0	6	3.93	
Yr 3	2006							2.45	2.45										
	2007	22	0	9	82	9	0	2.47	2.46										
	2008	21	5	5	81	5	5	2.38											

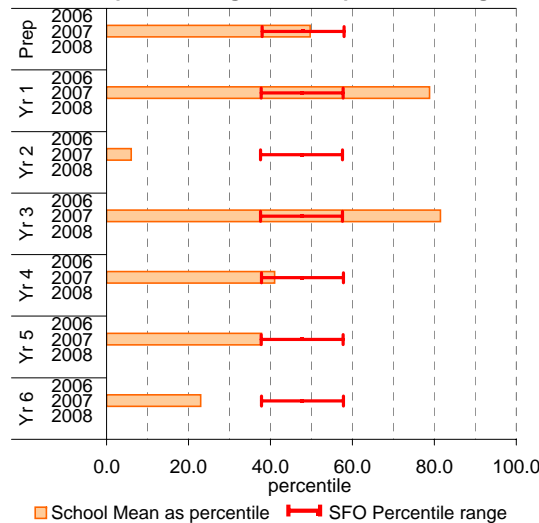


## Number

School Mean against State Mean^^

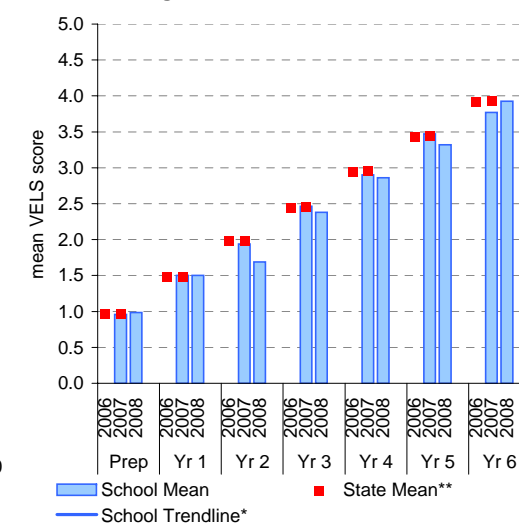


School Mean as percentile against SFO percentile range^^

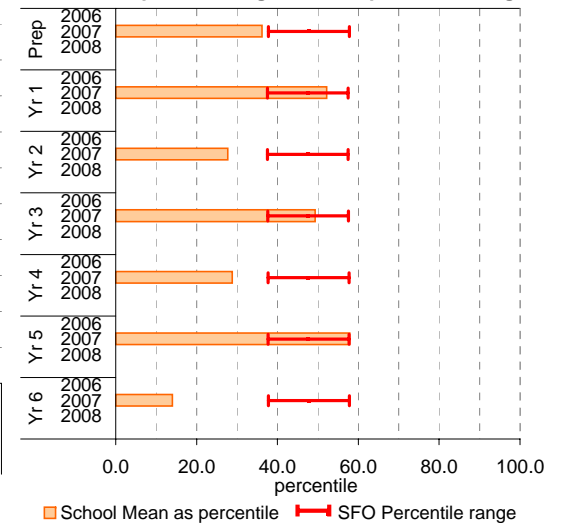


## Measurement, Chance and Data

School Mean against State Mean^^



School Mean as percentile against SFO percentile range^^



# Teacher Judgments against the VELS - English (primary)

School no: 2790  
 School name: Strathmerton Primary School  
 Source of data: Data retrieved electronically from CASES21.  
 Explanation: Teacher judgments of student achievement against the VELS.

## Reading

Year Level	Year	Total <sup>1</sup>	Assessed <sup>2</sup>	Level 1			Level 2				Level 3				Level 4				Level 5				Level 6				Level 6E			School mean	State mean <sup>3</sup>	Difference between school and state mean <sup>4</sup>									
				0.00	0.50	1.00	1.25	1.50	1.75	2.00	2.25	2.50	2.75	3.00	3.25	3.50	3.75	4.00	4.25	4.50	4.75	5.00	5.25	5.50	5.75	6.00	6.25	6.50	6.75												
prep	2008	15	15		4	6		4	1																							0.97									
prep	2007	12	12	3		4		4		1																						0.90	1.01	-0.11							
yr1	2008	9	9					4	4	1																						1.67									
prep	2006																																								
yr1	2007	12	12					6	4	2																									1.01						
yr2	2008	12	12				1		3	4		4																							1.67	1.57	0.09				
prep	2005																																								
yr1	2006																																			1.57					
yr2	2007	21	21				1	3	3	11		3																								1.89	2.06	-0.16			
yr3	2008	22	21					1	1	3		3	10	2	1																					2.36					
yr1	2005																																								
yr2	2006																																				2.04				
yr3	2007	26	25					2		1		17	4	1																							2.46	2.50	-0.04		
yr4	2008	20	20						2				1	12		5																					2.92				
yr2	2005																																								
yr3	2006																																					2.49			
yr4	2007	20	20								1	1	1	13		4																						2.97	2.97	0.00	
yr5	2008	21	21						1				1	2		1	9	7																				3.42			
yr3	2005																																								
yr4	2006																																					2.96			
yr5	2007	17	17						1			1		2		3	7	3																				3.28	3.45	-0.17	
yr6	2008	17	17										1			2	2	3	5		4																	3.81			
yr4	2005																																								
yr5	2006																																						3.44		
yr6	2007	14	14									1				2	4	5		2																			3.79	3.95	-0.16
yr5	2005																																								
yr6	2006																																						3.94		
yr6	2005																																								

shading indicates a 'C' grade (at the expected standard) on the VELS scale.

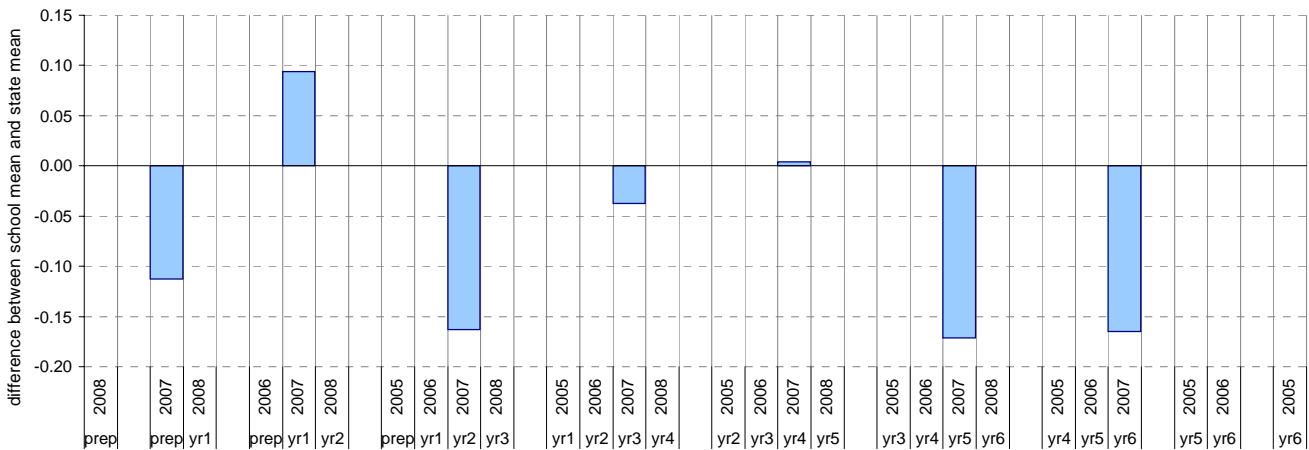
<sup>1</sup> The total number of students eligible to be assessed. This figure will typically match, or be very close to, the Year Level enrolment.

<sup>2</sup> The number of students assessed against the VELS. The difference between this figure and the total (1) should be accounted for by students assessed against Individual Learning Plans and/or the ESL companion in the case of English.

\* In 2006, approx. 850 schools assessed their students against the 0.25 VELS scale. 2006 benchmarks are therefore based on a subset of schools.

<sup>4</sup> 2008 benchmarks will be calculated in August, when data from all schools has been submitted.

Difference between school mean and state mean<sup>4</sup>, by cohort group



# Teacher Judgments against the VELS - English (primary)

**School no:** 2790  
**School name:** Strathmerton Primary School  
**Source of data:** Data retrieved electronically from CASES21.  
**Explanation:** Teacher judgments of student achievement against the VELS.

## Writing

Year Level	Year	Total <sup>1</sup>	Assessed <sup>2</sup>	Level 1			Level 2				Level 3				Level 4				Level 5				Level 6				Level 6E			School mean	State mean <sup>^</sup>	Difference between school and state mean <sup>^</sup>											
				0.00	0.50	1.00	1.25	1.50	1.75	2.00	2.25	2.50	2.75	3.00	3.25	3.50	3.75	4.00	4.25	4.50	4.75	5.00	5.25	5.50	5.75	6.00	6.25	6.50	6.75														
prep	2008	15	15		5	5	5																										0.92										
prep	2007	12	12	1	3	4	3		1																								0.92	0.97	-0.05								
yr1	2008	9	9				3	5		1																							1.47										
prep	2006																																		0.97								
yr1	2007	12	12					7	5																									1.60	1.49	0.12							
yr2	2008	12	12				1	1	3	3	4																							1.92									
prep	2005																																			1.47							
yr1	2006																																			1.88	1.96	-0.08					
yr2	2007	21	21				1	3	5	9	2	1																							2.29								
yr3	2008	22	21					1	1	3	7	7	2																							2.29							
yr1	2005																																				1.95						
yr2	2006																																				2.35	2.43	-0.08				
yr3	2007	26	25				1	2	1	6	12	2	1																								2.84						
yr4	2008	20	20				1	1		1	5	5	7																								2.84						
yr2	2005																																					2.42					
yr3	2006																																					2.42					
yr4	2007	20	20							1	1	3	13	2																								2.92	2.91	0.02			
yr5	2008	21	21					1			1	3	1	13	2																							3.33					
yr3	2005																																						2.89				
yr4	2006																																						2.89				
yr5	2007	17	17							1	1	3	3	6	3																								3.29	3.39	-0.10		
yr6	2008	17	17																																				3.79				
yr4	2005																																							3.38			
yr5	2006																																							3.38			
yr6	2007	14	14							1				3	7	2	1																							3.68	3.89	-0.21	
yr5	2005																																								3.88		
yr6	2006																																								3.88		
yr6	2005																																									3.88	

shading indicates a 'C' grade (at the expected standard) on the VELS scale.

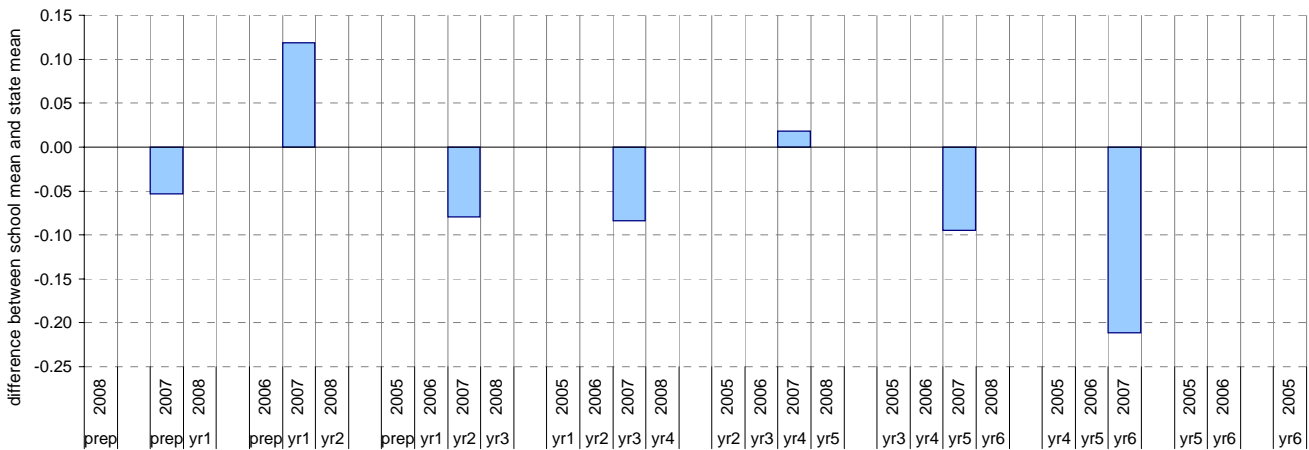
<sup>1</sup> The total number of students eligible to be assessed. This figure will typically match, or be very close to, the Year Level enrolment.

<sup>2</sup> The number of students assessed against the VELS. The difference between this figure and the total (1) should be accounted for by students assessed against Individual Learning Plans and/or the ESL companion in the case of English.

\* In 2006, approx. 850 schools assessed their students against the 0.25 VELS scale. 2006 benchmarks are therefore based on a subset of schools.

<sup>^</sup> 2008 benchmarks will be calculated in August, when data from all schools has been submitted.

Difference between school mean and state mean<sup>^</sup>, by cohort group



# Teacher Judgments against the VELS - English (primary)

School no: 2790  
 School name: Strathmerton Primary School  
 Source of data: Data retrieved electronically from CASES21.  
 Explanation: Teacher judgments of student achievement against the VELS.

## Speaking and Listening

Year Level	Year	Total <sup>1</sup>	Assessed <sup>2</sup>	Level 1			Level 2				Level 3				Level 4				Level 5				Level 6				Level 6E			School mean	State mean <sup>^</sup>	Difference between school and state mean <sup>^</sup>									
				0.00	0.50	1.00	1.25	1.50	1.75	2.00	2.25	2.50	2.75	3.00	3.25	3.50	3.75	4.00	4.25	4.50	4.75	5.00	5.25	5.50	5.75	6.00	6.25	6.50	6.75												
prep	2008	15	15		2	12		1																									0.97								
prep	2007	12	12	2	2	5	2	1																										0.83	0.97	-0.13					
yr1	2008	9	9				5	4																										1.61							
prep	2006																																		0.97						
yr1	2007	12	12	1			8	3																											1.48	1.48	0.00				
yr2	2008	12	12				3	9																											1.94						
prep	2005																																			1.48					
yr1	2006																																			1.89	1.98	-0.08			
yr2	2007	21	21				2	5	14																											2.35					
yr3	2008	22	21				1	2		5	11	2																									2.35				
yr1	2005																																				1.98				
yr2	2006																																				2.45	2.46	-0.01		
yr3	2007	25	24				1			23																												2.84			
yr4	2008	20	20					1	1		1	17																										2.84			
yr2	2005																																					2.45			
yr3	2006																																					2.45			
yr4	2007	20	20							3	2	13	2																									2.92	2.94	-0.02	
yr5	2008	21	21				1			1	4	1	12	2																								3.31			
yr3	2005																																					2.94			
yr4	2006																																					2.94			
yr5	2007	17	17										5	12																									3.43	3.43	-0.01
yr6	2008	17	17										3	6	7	1																							3.84		
yr4	2005																																						3.43		
yr5	2006																																						3.43		
yr6	2007	14	14							1	1		8	4																									3.70	3.94	-0.24
yr5	2005																																						3.93		
yr6	2006																																						3.93		
yr6	2005																																						3.93		

shading indicates a 'C' grade (at the expected standard) on the VELS scale.

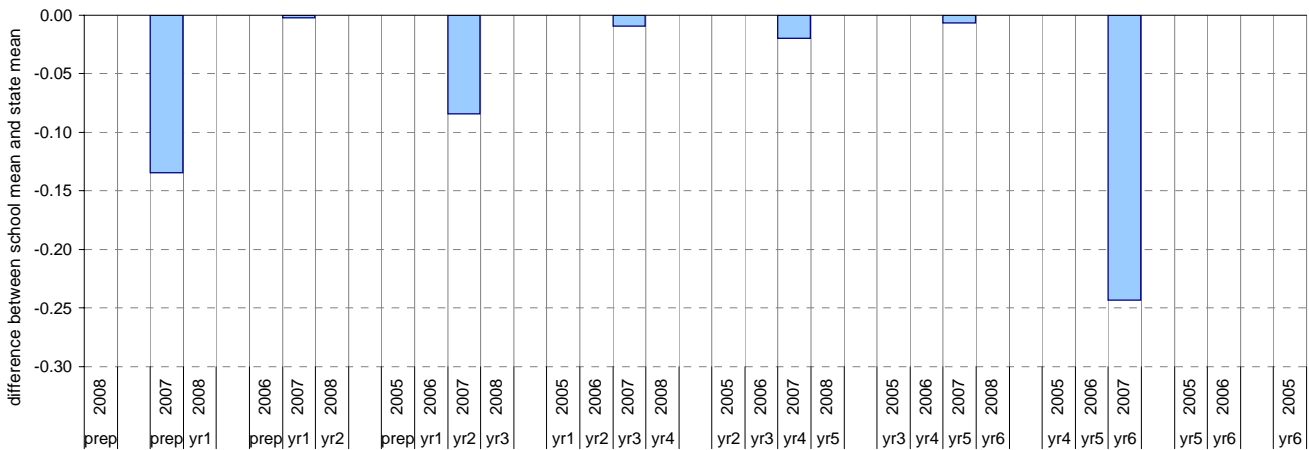
<sup>1</sup> The total number of students eligible to be assessed. This figure will typically match, or be very close to, the Year Level enrolment.

<sup>2</sup> The number of students assessed against the VELS. The difference between this figure and the total (1) should be accounted for by students assessed against Individual Learning Plans and/or the ESL companion in the case of English.

\* In 2006, approx. 850 schools assessed their students against the 0.25 VELS scale. 2006 benchmarks are therefore based on a subset of schools.

<sup>^</sup> 2008 benchmarks will be calculated in August, when data from all schools has been submitted.

### Difference between school mean and state mean<sup>^</sup>, by cohort group





# Teacher Judgments against the VELS - Mathematics (primary)

School no: 2790  
 School name: Strathmerton Primary School  
 Source of data: Data retrieved electronically from CASES21.  
 Explanation: Teacher judgments of student achievement against the VELS.

## Measurement, Chance and Data

Year Level	Year	Total <sup>1</sup>	Assessed <sup>2</sup>	Level 1			Level 2				Level 3				Level 4				Level 5				Level 6				Level 6E				School mean	State mean <sup>3</sup>	Difference between school and state mean <sup>4</sup>			
				0.00	0.50	1.00	1.25	1.50	1.75	2.00	2.25	2.50	2.75	3.00	3.25	3.50	3.75	4.00	4.25	4.50	4.75	5.00	5.25	5.50	5.75	6.00	6.25	6.50	6.75							
prep	2008	15	15	1	13		1																							0.98						
prep	2007	12	12	2	9		1																						0.96	0.97	-0.01					
yr1	2008	9	9			9																							1.50							
prep	2006																														0.97					
yr1	2007	12	12				12																						1.50	1.49	0.01					
yr2	2008	12	12				5	5	2																				1.69							
prep	2005																															1.48				
yr1	2006																															1.94	1.98	-0.03		
yr2	2007	21	21				5	16																					1.94	1.98	-0.03					
yr3	2008	22	21				1		1	7	10	1	1																2.38							
yr1	2005																															1.97				
yr2	2006																															2.47	2.46	0.00		
yr3	2007	23	22				2		1	17	2																					2.86				
yr4	2008	20	20				2			3	13	2																				2.86				
yr2	2005																																2.45			
yr3	2006																																2.90	2.95	-0.05	
yr4	2007	20	20						3	2	15																						3.32			
yr5	2008	21	21				1		1	2	3	13	1																				3.32			
yr3	2005																																2.94			
yr4	2006																																3.47	3.43	0.04	
yr5	2007	17	17						1		13	2																					3.93			
yr6	2008	17	17							1		6	5	5																			3.93			
yr4	2005																																	3.42		
yr5	2006																																	3.77	3.93	-0.16
yr6	2007	14	14						1	1		3	9																				3.77	3.93	-0.16	
yr5	2005																																	3.92		
yr6	2006																																	3.92		
yr6	2005																																			

shading indicates a 'C' grade (at the expected standard) on the VELS scale.

<sup>1</sup> The total number of students eligible to be assessed. This figure will typically match, or be very close to, the Year Level enrolment.

<sup>2</sup> The number of students assessed against the VELS. The difference between this figure and the total (1) should be accounted for by students assessed against Individual Learning Plans and/or the ESL companion in the case of English.

\* In 2006, approx. 850 schools assessed their students against the 0.25 VELS scale. 2006 benchmarks are therefore based on a subset of schools.

<sup>4</sup> 2008 benchmarks will be calculated in August, when data from all schools has been submitted.

### Difference between school mean and state mean<sup>4</sup>, by cohort group



# NAPLAN Year 3 and 5: Reading

School no: 2790

School name: Strathmerton Primary School

Source of data: Victorian Curriculum and Assessment Authority.

Explanation: The National Assessment Program - Literacy and Numeracy (NAPLAN) is conducted each year for students in Years 3, 5, 7 and 9. For more detailed NAPLAN data, refer to the NAPLAN Data Service website at <http://naplands.vcaa.vic.edu.au>. A reference guide for analysing NAPLAN data is available at <http://www.vcaa.vic.edu.au/vcaa/prep10/naplan/schools/analysingnaplandata.pdf>.

Notes: \* % student participation = (students who participated in NAPLAN / February enrolments) \* 100

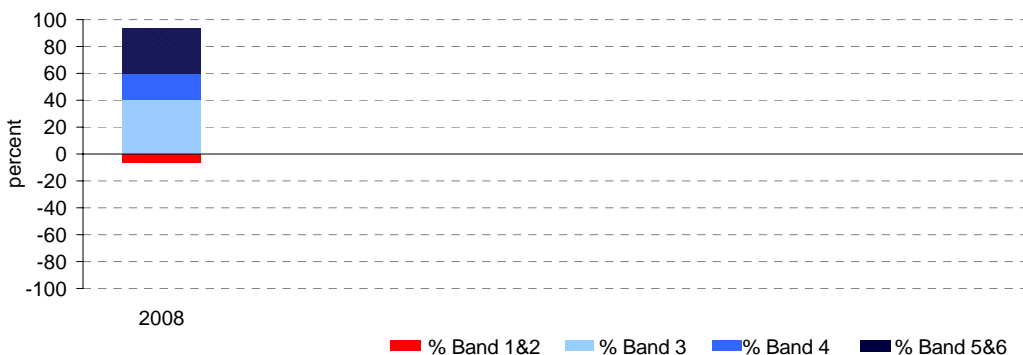
## Year 3

	student participation		Percent of students by NAP Band						Mean Scaled Score	
	(n)	(%)*	Band 1	Band 2	Band 3	Band 4	Band 5	Band 6	School	State
2008	15	68	0	7	40	20	20	13	397.4	415.8

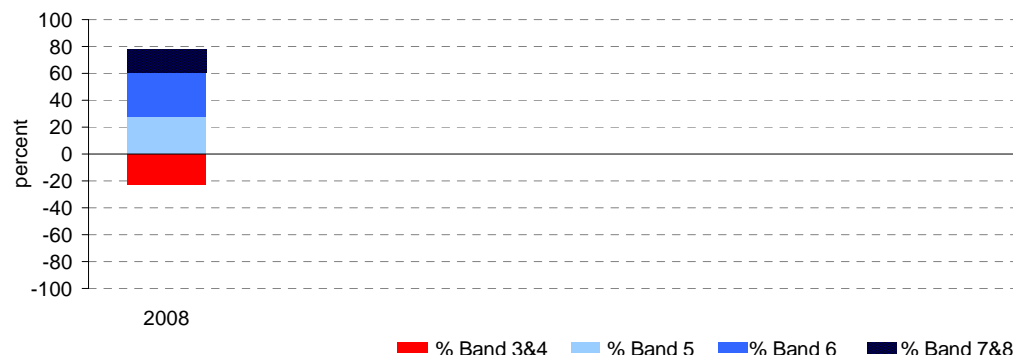
## Year 5

	student participation		Percent of students by NAP Band						Mean Scaled Score	
	(n)	(%)*	Band 3	Band 4	Band 5	Band 6	Band 7	Band 8	School	State
2008	18	90	6	17	28	33	17	0	477.8	492.1

Percent of students by NAP Band

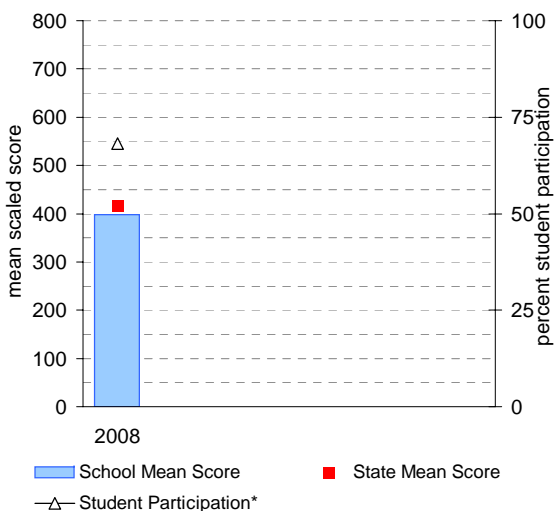


Percent of students by NAP Band

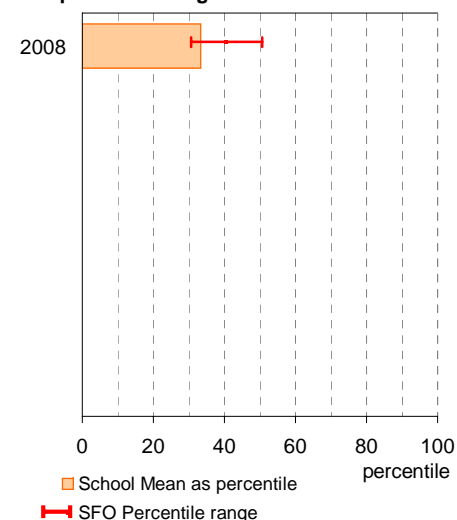


## Year 3

School Mean against State Mean, including Participation

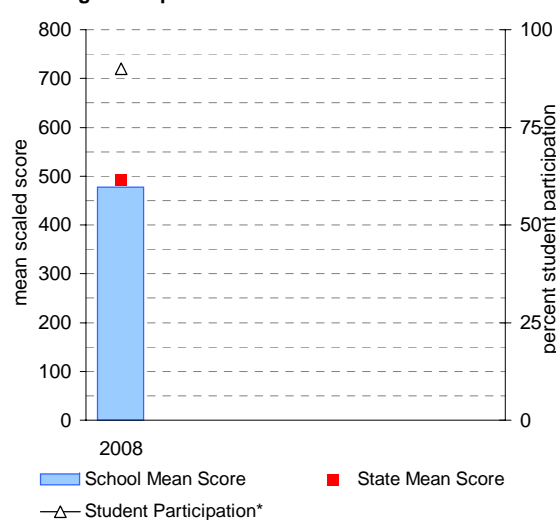


School Mean as percentile against SFO percentile range

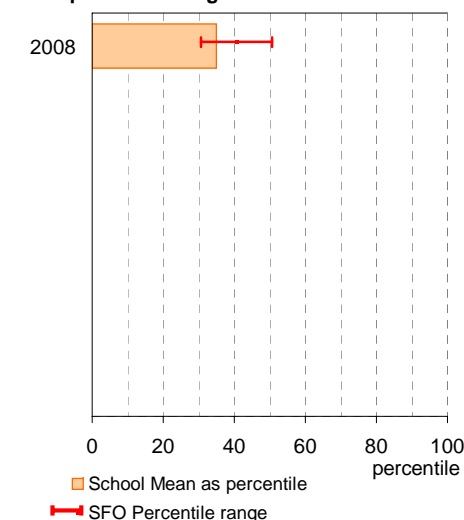


## Year 5

School Mean against State Mean, including Participation



School Mean as percentile against SFO percentile range



# NAPLAN Year 3 and 5: Writing

School no: 2790

School name: Strathmerton Primary School

Source of data: Victorian Curriculum and Assessment Authority.

Explanation: The National Assessment Program - Literacy and Numeracy (NAPLAN) is conducted each year for students in Years 3, 5, 7 and 9. For more detailed NAPLAN data, refer to the NAPLAN Data Service website at <http://naplands.vcaa.vic.edu.au>. A reference guide for analysing NAPLAN data is available at <http://www.vcaa.vic.edu.au/vcaa/prep10/naplan/schools/analysingnaplandata.pdf>.

Notes: \* % student participation = (students who participated in NAPLAN / February enrolments) \* 100

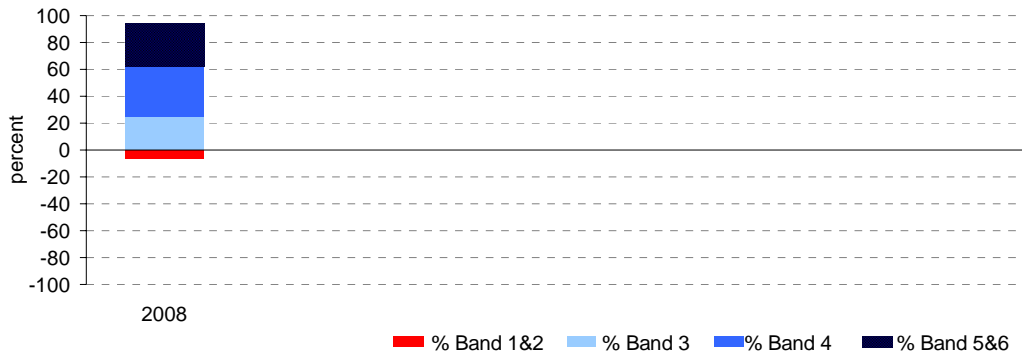
## Year 3

	student participation		Percent of students by NAP Band						Mean Scaled Score	
	(n)	(%)*	Band 1	Band 2	Band 3	Band 4	Band 5	Band 6	School	State
2008	16	73	6	0	25	38	25	6	398.3	421.2

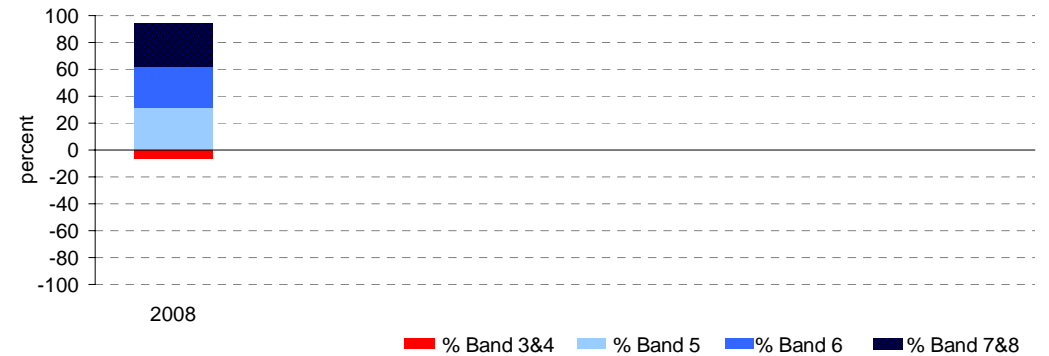
## Year 5

	student participation		Percent of students by NAP Band						Mean Scaled Score	
	(n)	(%)*	Band 3	Band 4	Band 5	Band 6	Band 7	Band 8	School	State
2008	16	80	0	6	31	31	31	0	494.9	496.0

Percent of students by NAP Band

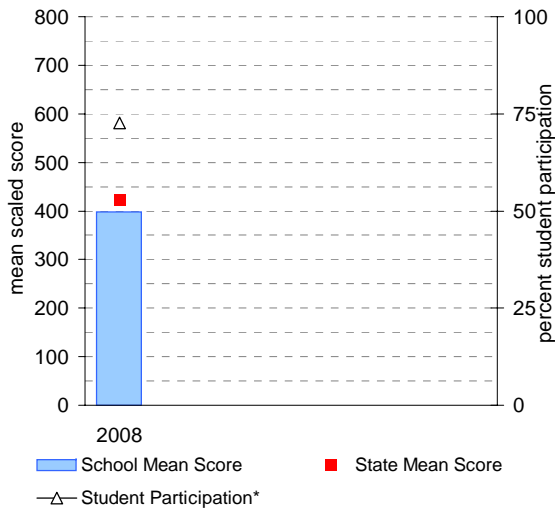


Percent of students by NAP Band

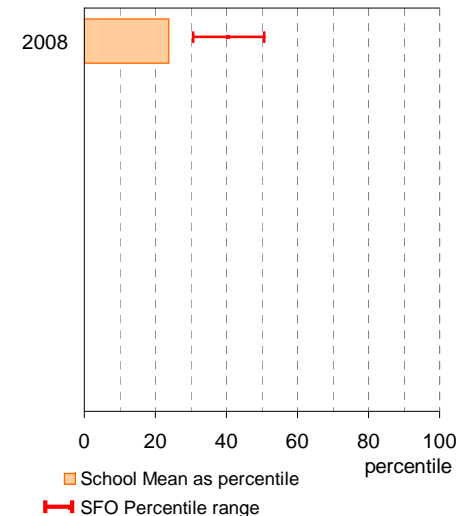


## Year 3

School Mean against State Mean, including Participation

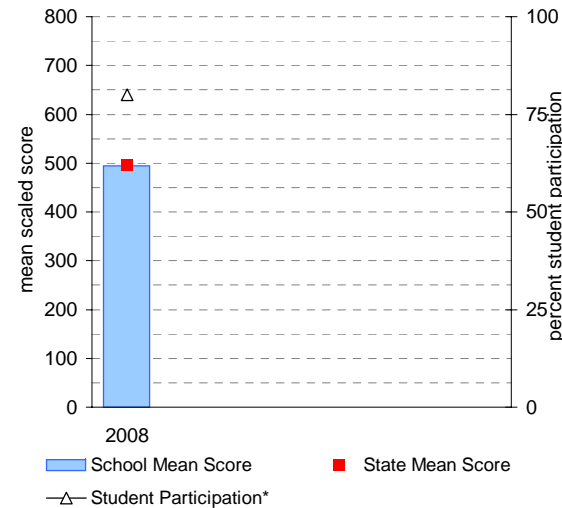


School Mean as percentile against SFO percentile range

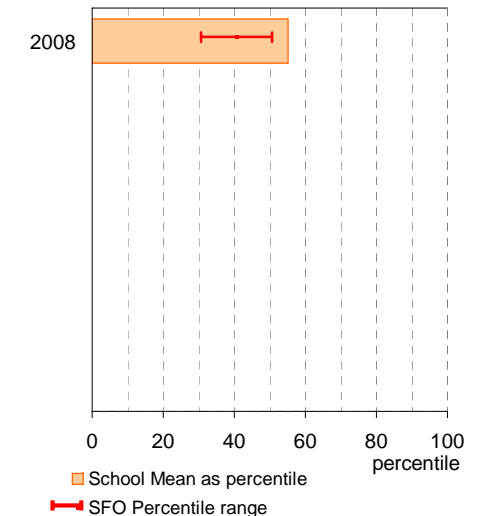


## Year 5

School Mean against State Mean, including Participation



School Mean as percentile against SFO percentile range



# NAPLAN Year 3 and 5: Numeracy

School no: 2790

School name: Strathmerton Primary School

Source of data: Victorian Curriculum and Assessment Authority.

Explanation: The National Assessment Program - Literacy and Numeracy (NAPLAN) is conducted each year for students in Years 3, 5, 7 and 9. For more detailed NAPLAN data, refer to the NAPLAN Data Service website at <http://naplands.vcaa.vic.edu.au>. A reference guide for analysing NAPLAN data is available at <http://www.vcaa.vic.edu.au/vcaa/prep10/naplan/schools/analysingnaplandata.pdf>.

Notes: \* % student participation = (students who participated in NAPLAN / February enrolments) \* 100

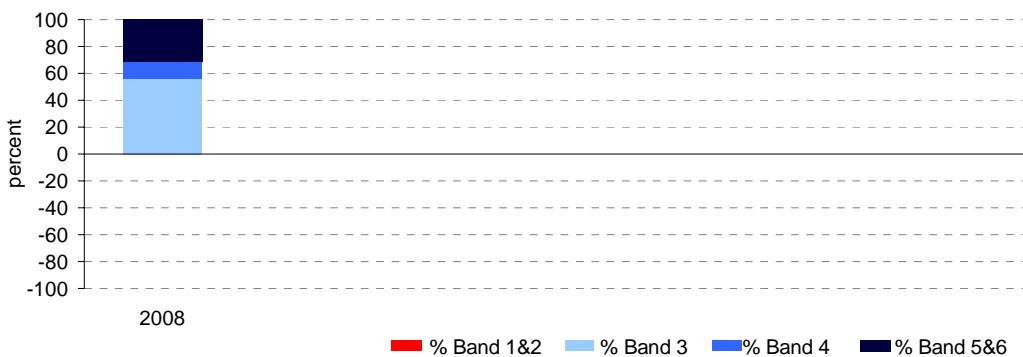
## Year 3

	student participation		Percent of students by NAP Band						Mean Scaled Score	
	(n)	(%)*	Band 1	Band 2	Band 3	Band 4	Band 5	Band 6	School	State
2008	16	73	0	0	56	13	31	0	386.8	416.1

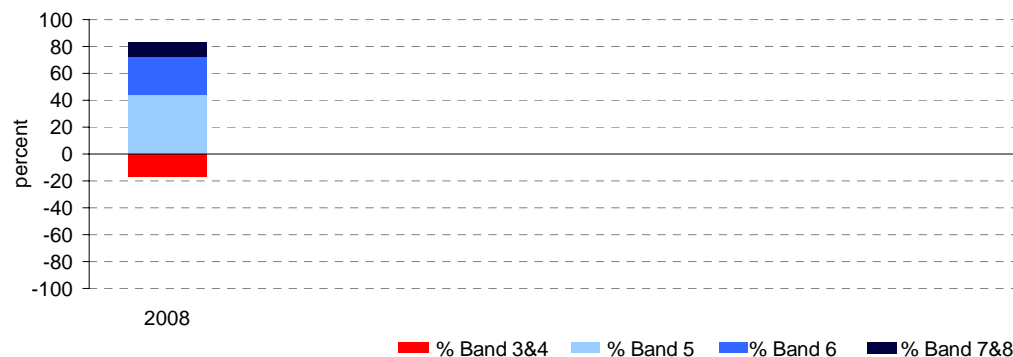
## Year 5

	student participation		Percent of students by NAP Band						Mean Scaled Score	
	(n)	(%)*	Band 3	Band 4	Band 5	Band 6	Band 7	Band 8	School	State
2008	18	90	0	17	44	28	0	11	478.2	487.8

Percent of students by NAP Band

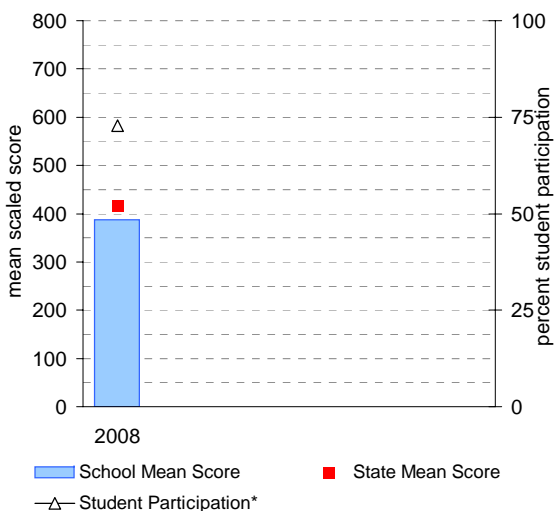


Percent of students by NAP Band

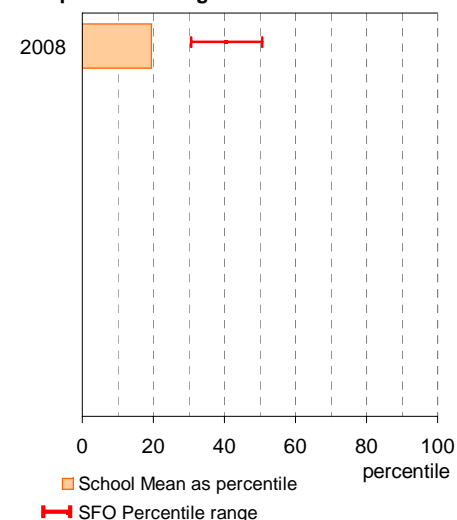


## Year 3

School Mean against State Mean, including Participation

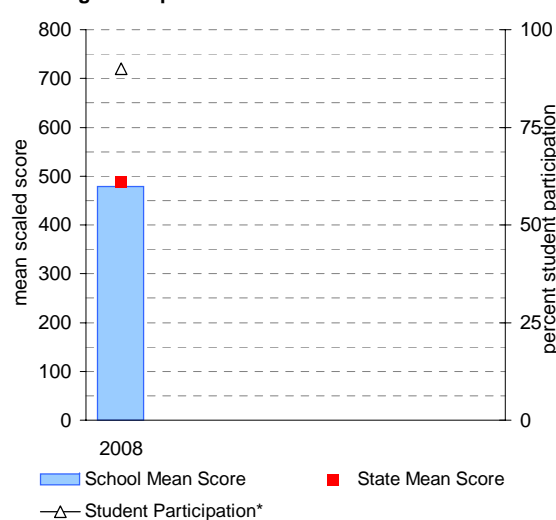


School Mean as percentile against SFO percentile range

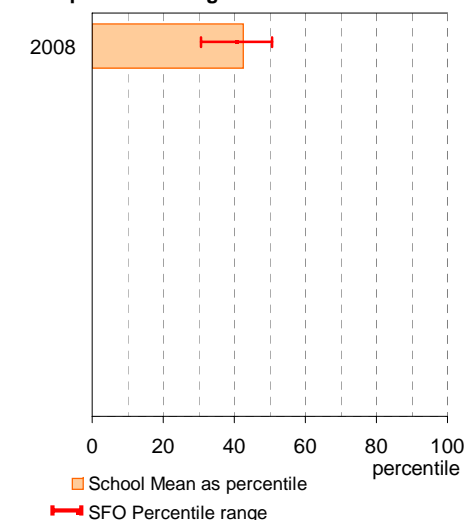


## Year 5

School Mean against State Mean, including Participation



School Mean as percentile against SFO percentile range



# AIM Year 3 and 5: Reading

School no: 2790

School name: Strathmerton Primary School

Source of data: Victorian Curriculum and Assessment Authority.

Explanation: The Achievement Improvement Monitor (AIM) was a statewide assessment program conducted each year up until and including 2007 for students in Years 3, 5, 7 and 9. This has now been replaced by NAPLAN. For more detailed AIM data, refer to the AIM Data Service website at <http://aimds.vcaa.vic.edu.au>.

Notes: \* The school trendline is only plotted when there is data for each calendar year.  
 \*\* % student participation = (students who participated in AIM / Feb enrolments) \* 100

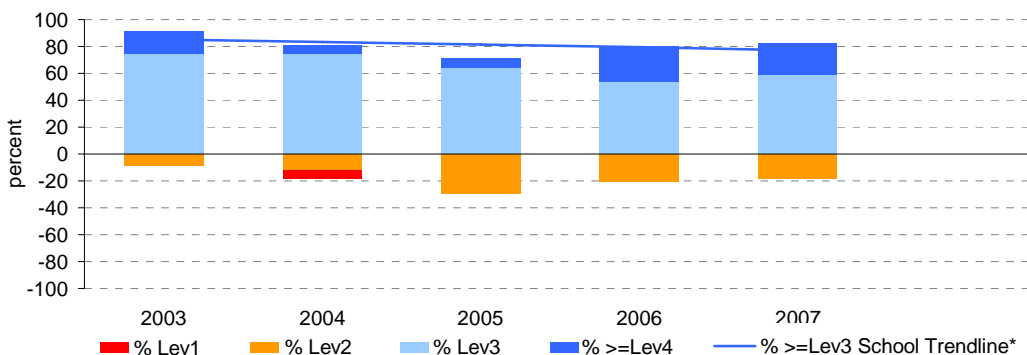
## Year 3

	student participation		Percent of students by VEL5 level							Mean CSF / VEL5 Score	
	(n)	(%)**	Lev1	Lev2	Lev3	Lev4	Lev5	Lev6	Lev6E	School	State
2003	12	92	0	8	75	17	0	0	0	2.5	2.3
2004	16	107	6	13	75	6	0	0	0	2.4	2.3
2005	14	88	0	29	64	7	0	0	0	2.3	2.4
2006	15	88	0	20	53	27	0	0	0	2.6	2.3
2007	17	71	0	18	59	24	0	0	0	2.6	2.3

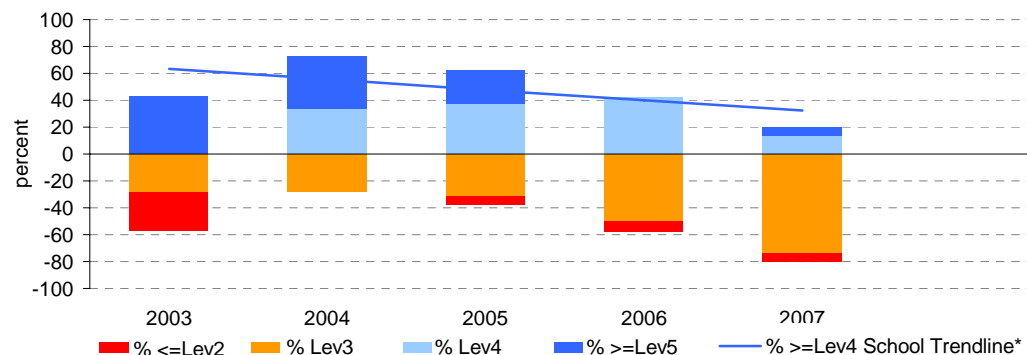
## Year 5

	student participation		Percent of students by VEL5 level						Mean CSF / VEL5 Score		
	(n)	(%)**	Lev1	Lev2	Lev3	Lev4	Lev5	Lev6	Lev6E	School	State
2003	7	50	0	29	29	0	43	0	0	3.3	3.2
2004	18	82	0	0	28	33	39	0	0	3.5	3.2
2005	16	89	0	6	31	38	25	0	0	3.4	3.2
2006	12	92	0	8	50	42	0	0	0	3.0	3.1
2007	15	88	0	7	73	13	7	0	0	2.7	3.2

Percent of students by VEL5 level

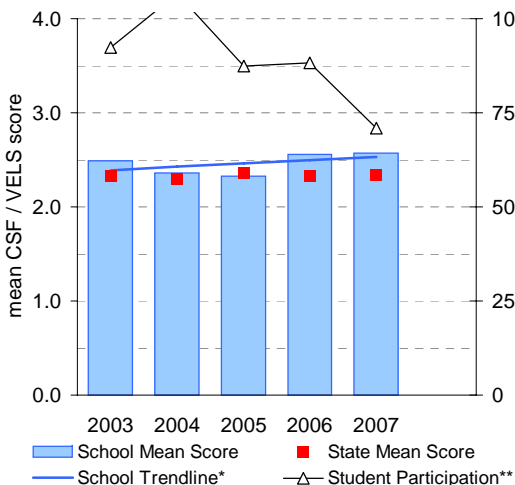


Percent of students by VEL5 level

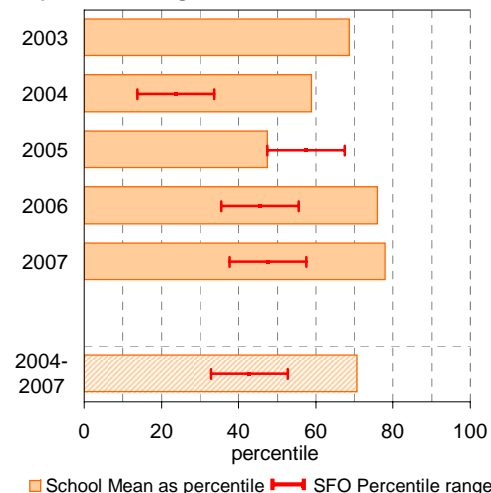


## Year 3

School Mean against State Mean, including Participation

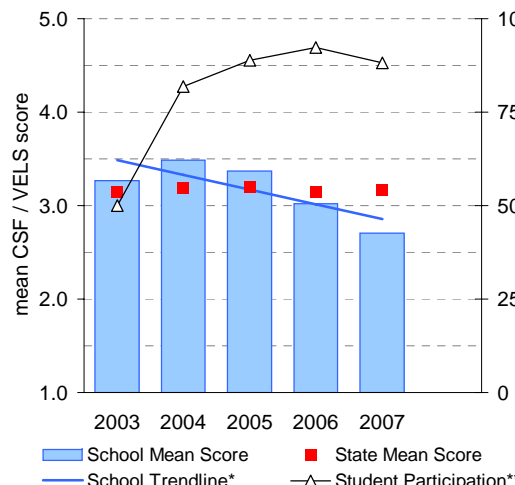


School Mean as percentile against SFO percentile range

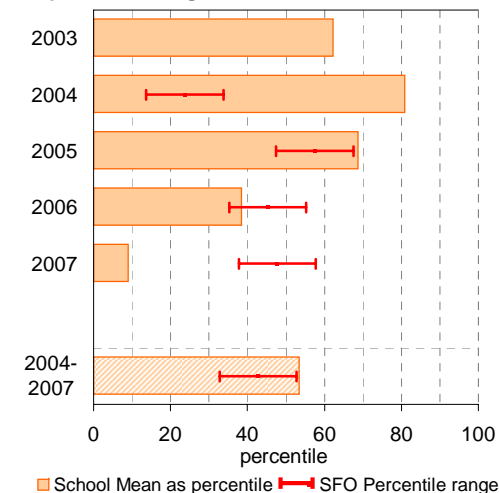


## Year 5

School Mean against State Mean, including Participation



School Mean as percentile against SFO percentile range



# AIM Year 3 and 5: Number

School no: 2790

School name: Strathmerton Primary School

Source of data: Victorian Curriculum and Assessment Authority.

Explanation: The Achievement Improvement Monitor (AIM) was a statewide assessment program conducted each year up until and including 2007 for students in Years 3, 5, 7 and 9. This has now been replaced by NAPLAN. For more detailed AIM data, refer to the AIM Data Service website at <http://aimds.vcaa.vic.edu.au>.

Notes: \* The school trendline is only plotted when there is data for each calendar year.  
 \*\* % student participation = (students who participated in AIM / Feb enrolments) \* 100

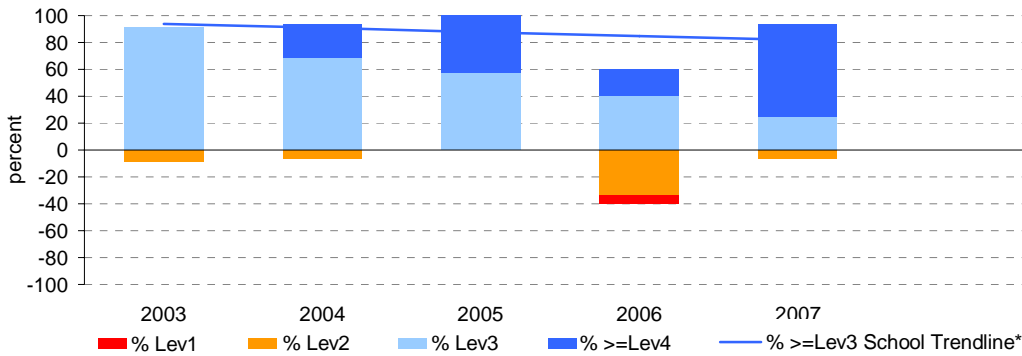
## Year 3

	student participation		Percent of students by VELs level							Mean CSF / VELs Score	
	(n)	(%)**	Lev1	Lev2	Lev3	Lev4	Lev5	Lev6	Lev6E	School	State
2003	12	92	0	8	92	0	0	0	0	2.3	2.4
2004	16	107	0	6	69	25	0	0	0	2.7	2.4
2005	14	88	0	0	57	43	0	0	0	2.9	2.4
2006	15	88	7	33	40	20	0	0	0	2.2	2.4
2007	16	67	0	6	25	69	0	0	0	3.0	2.4

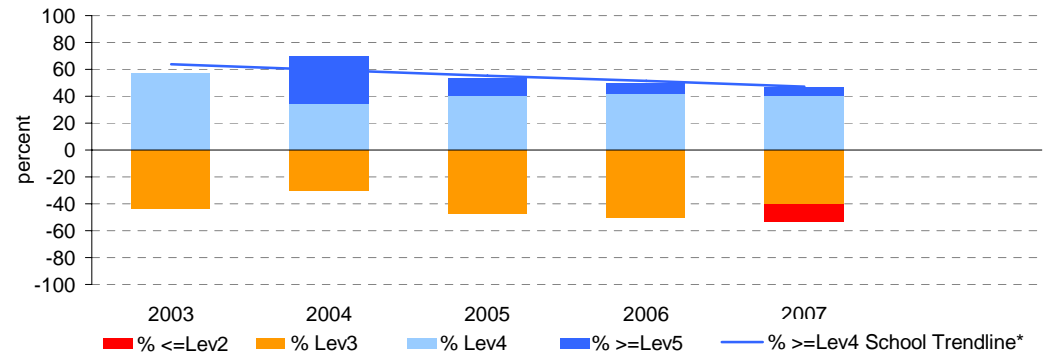
## Year 5

	student participation		Percent of students by VELs level							Mean CSF / VELs Score	
	(n)	(%)**	Lev1	Lev2	Lev3	Lev4	Lev5	Lev6	Lev6E	School	State
2003	7	50	0	0	43	57	0	0	0	3.0	3.1
2004	20	91	0	0	30	35	35	0	0	3.6	3.2
2005	15	83	0	0	47	40	13	0	0	3.2	3.2
2006	12	92	0	0	50	42	8	0	0	3.1	3.2
2007	15	88	0	13	40	40	7	0	0	3.0	3.2

Percent of students by VELs level

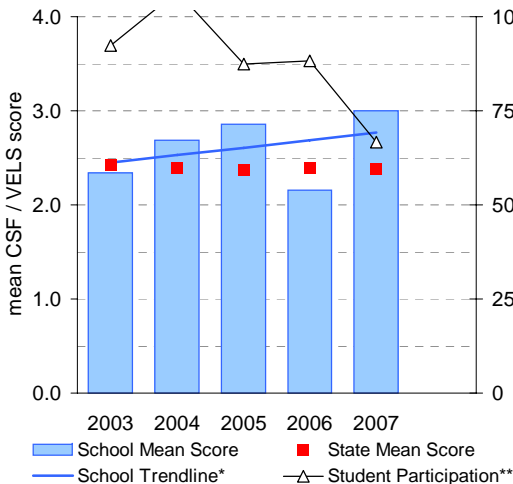


Percent of students by VELs level

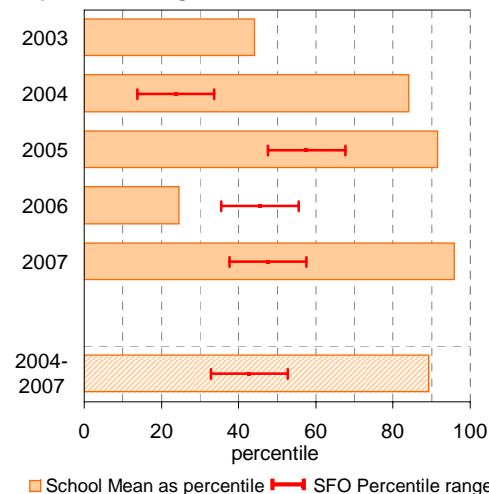


## Year 3

School Mean against State Mean, including Participation

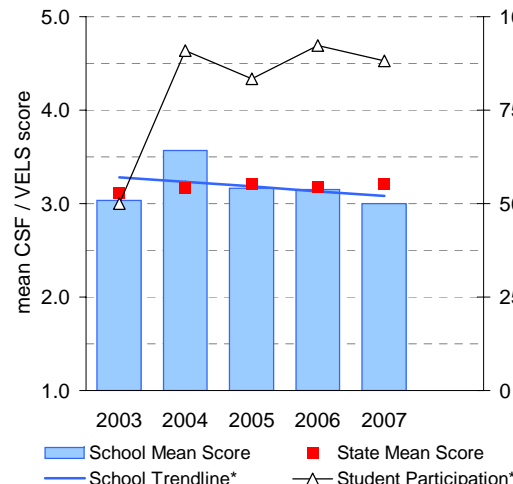


School Mean as percentile against SFO percentile range

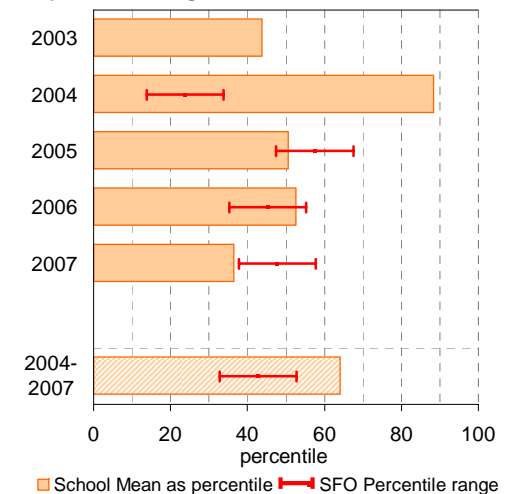


## Year 5

School Mean against State Mean, including Participation



School Mean as percentile against SFO percentile range



# Teacher Assessment of Student Progress (PSD students)

**School no:** 2790

**School name:** Strathmerton Primary School

**Explanation:** Teachers assess their students' progress against the 8 VELS Domains / CSF KLAs using a 6-point scale (students in special schools and those who cannot be assessed against the VELS / CSF).

**Source of data:** Data transmitted from school to DEECD via an online web-form.

	No progress (%)	Little progress (%)	Satisfactory progress (%)	Good progress (%)	Very good progress (%)	Excellent progress (%)	Total students assessed <sup>1</sup> (no.)
--	--------------------	---------------------------	---------------------------------	-------------------------	------------------------------	------------------------------	--

## 2004 (by CSF KLA)

English  
Mathematics  
Science  
Technology  
The Arts  
H&PE  
SOSE

## 2005 (by CSF KLA)

English  
Mathematics  
Science  
Technology  
The Arts  
H&PE  
SOSE

## 2006 (by VELS Domain)

English  
Mathematics  
Science  
ICT  
The Arts  
H&PE  
Civics & Citizenship

## 2007 (by VELS Domain)

English  
Mathematics  
Science  
ICT  
The Arts  
H&PE  
Civics & Citizenship

## 2008 (by VELS Domain)

English  
Mathematics  
Science  
ICT  
The Arts  
H&PE  
Civics & Citizenship

## 2007 Primary state benchmarks (by VELS Domain)\*

English	1	21	32	26	13	6
Mathematics	2	21	33	23	15	7
Science	4	19	47	18	8	4
ICT	1	17	43	17	14	8
The Arts	2	14	44	24	10	5
H&PE	2	15	37	26	15	5
Civics & Citizenship	3	24	34	22	12	5

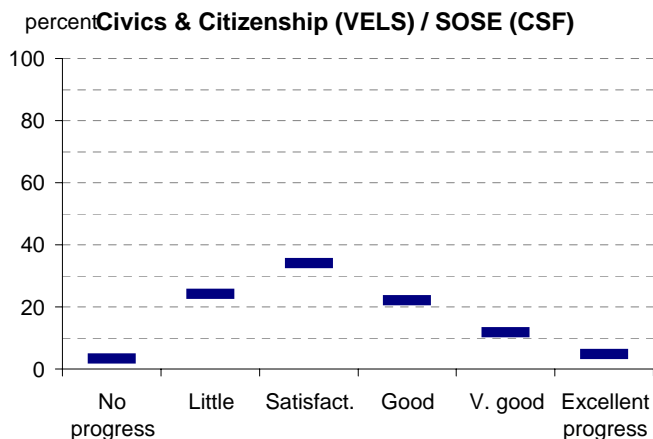
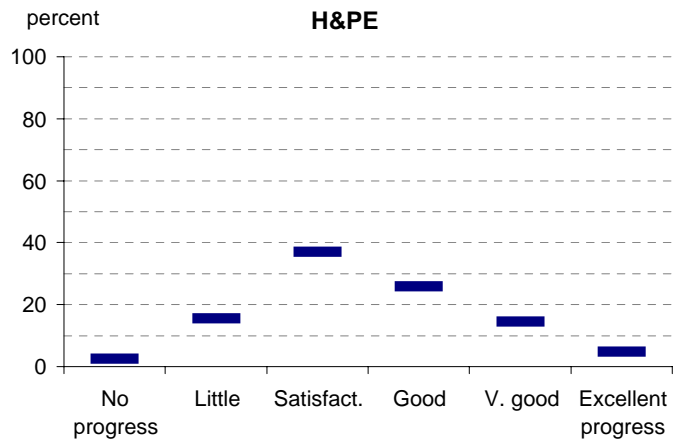
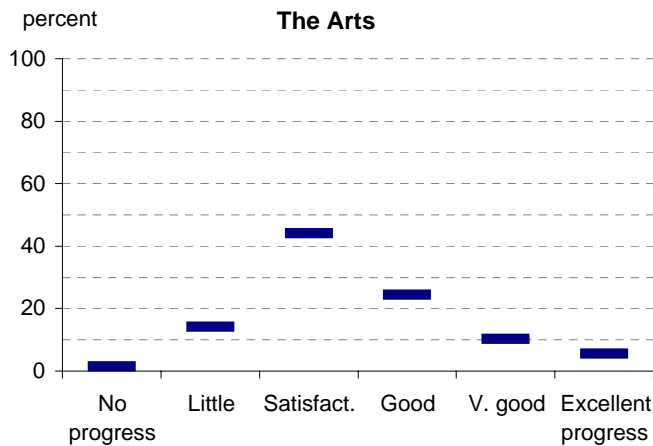
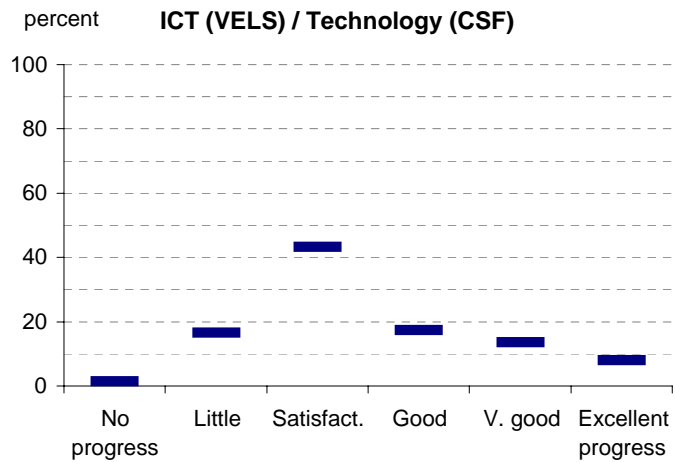
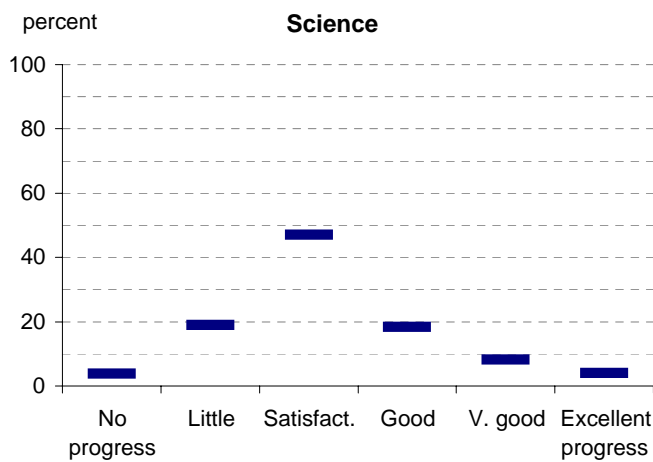
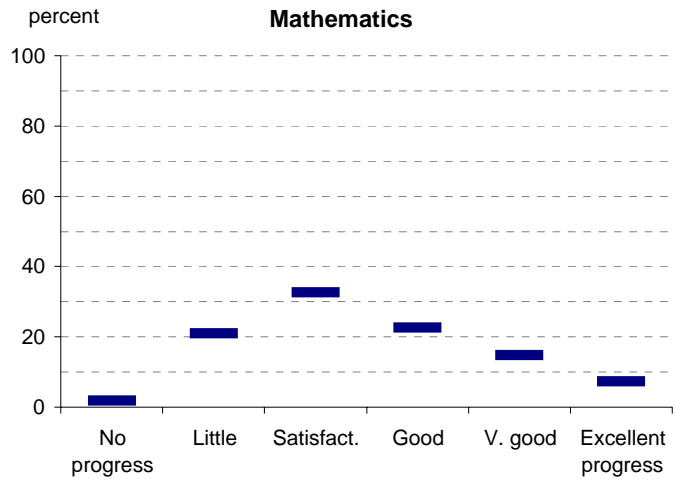
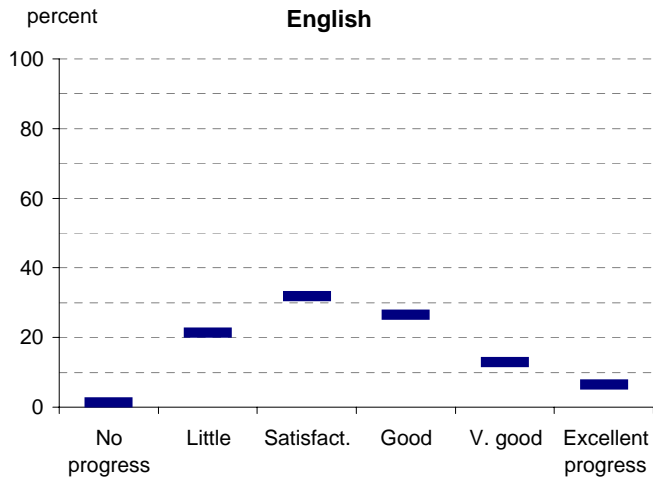
Notes: <sup>1</sup> If schools provided percentages only, it is not possible to report the number of students assessed. In these cases, the total percentage (100) will be shown.

\* 2008 benchmarks will be calculated in August, when data from all schools has been submitted.

# Teacher Assessment of Student Progress (PSD students)

School no: 2790

School name: Strathmerton Primary School



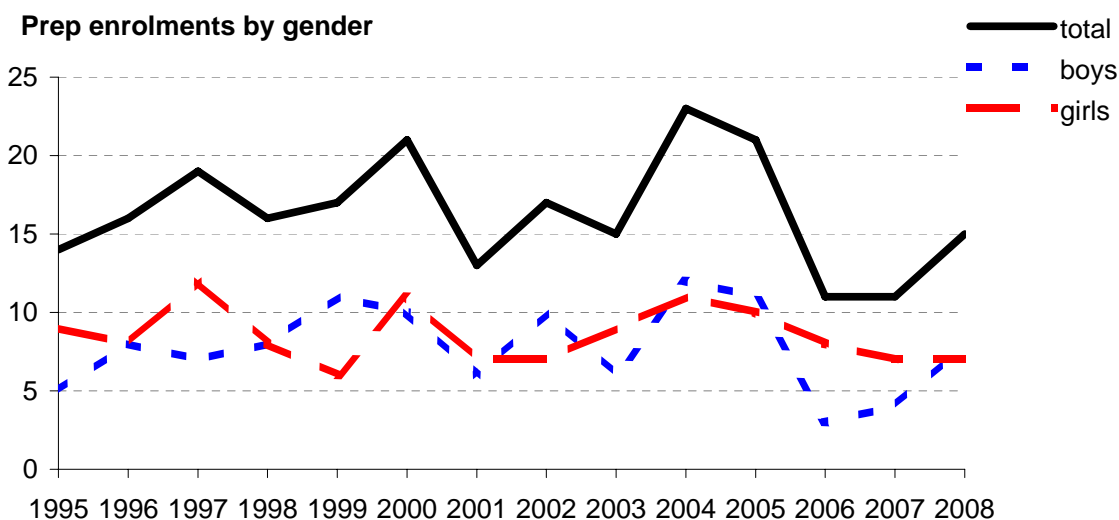
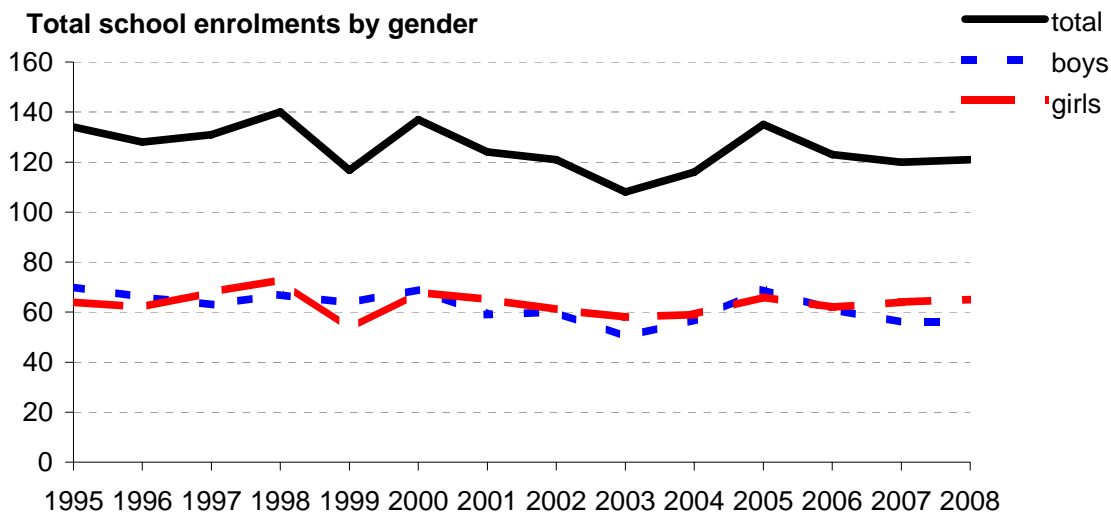
- 2004 (by CSF KLA)
- 2005 (by CSF KLA)
- 2006 (by VELS Domain)
- 2007 (by VELS Domain)
- 2008 (by VELS Domain)
- 2007 Primary state benchmarks (by VELS Domain)\*

Notes: \* 2008 benchmarks will be calculated in August, when data from all schools has been submitted.

# Enrolments

**School no:** 2790  
**School name:** Strathmerton Primary School  
**Explanation:** Enrolments at February census.  
**Source of data:** February census.

Year	Total school enrolment			Prep enrolment			Year 7 enrolments		
	boys	girls	total	boys	girls	total	boys	girls	total
1995	70	64	134	5	9	14			
1996	66	62	128	8	8	16			
1997	63	68	131	7	12	19			
1998	67	73	140	8	8	16			
1999	64	53	117	11	6	17			
2000	69	68	137	10	11	21			
2001	59	65	124	6	7	13			
2002	60	61	121	10	7	17			
2003	50	58	108	6	9	15			
2004	57	59	116	12	11	23			
2005	69	66	135	11	10	21			
2006	61	62	123	3	8	11			
2007	56	64	120	4	7	11			
2008	56	65	121	8	7	15			



# Student Absence

School no: 2790

School name: Strathmerton Primary School

Source of data: Data retrieved electronically from CASES21.

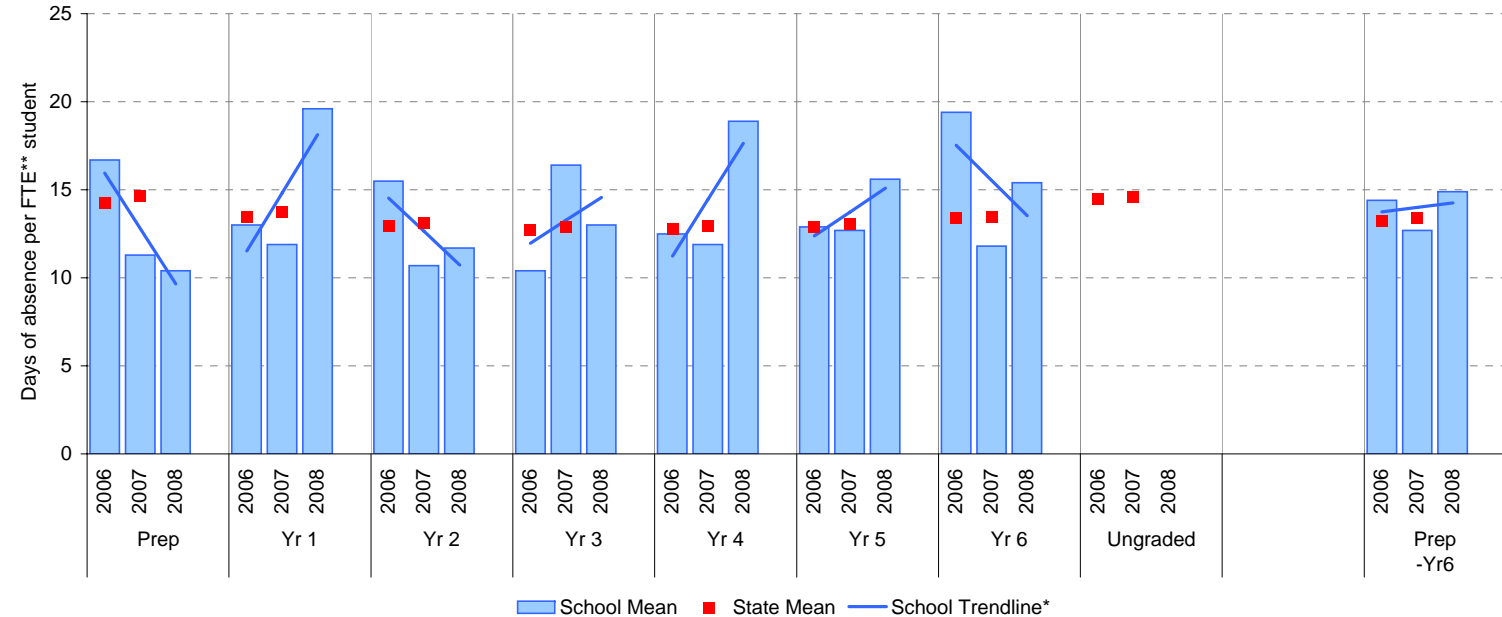
Explanation: The average (mean) number of absent days† per FTE\*\* student.

Note that 20 absent days equates to 1 absent day per fortnight, and 10 absent days to 1 absent day per month.

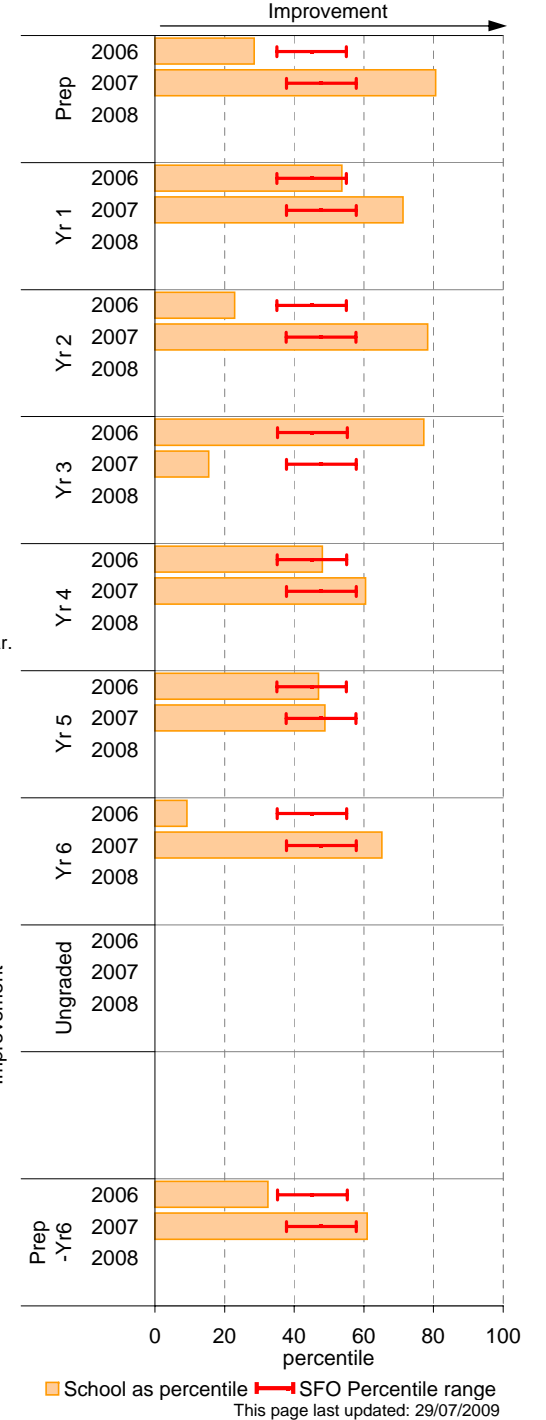
	School						2007 state benchmark^		
	2006		2007		2008		25th ptile	Mean	75th ptile
	Enrolments	Avg absent days / FTE** student	Enrolments	Avg absent days / FTE** student	Enrolments	Avg absent days / FTE** student			
Prep	11.5	16.7	10.9	11.3	15.0	10.4	12.0	14.6	17.7
Yr 1	21.6	13	11.1	11.9	9.4	19.6	11.5	13.8	16.1
Yr 2	24.6	15.5	21.0	10.7	14.2	11.7	11.0	13.1	15.1
Yr 3	18.7	10.4	24.9	16.4	22.4	13	10.8	12.9	14.9
Yr 4	17.1	12.5	20.3	11.9	22.2	18.9	10.8	12.9	15.0
Yr 5	13.6	12.9	17.0	12.7	20.8	15.6	10.6	13.1	15.0
Yr 6	20.0	19.4	14.2	11.8	17.0	15.4	11.0	13.4	15.7
Ungraded								14.6	
P-6 mean		14.4		12.7		14.9		13.4	

Notes: † Includes non-curriculum absences only (absence codes 200, 201, 202, 203, 205, 206, 207, 208, 209, 210, 211, 300, 401, 500, 700, 800, 804, 805, 900).  
 \* The school trendline is only plotted when there is data for each calendar year.  
 \*\* FTE = Full Time Equivalent (including part-time and part-year fractions).  
 ^ 2008 benchmarks and percentiles will be calculated in August, when data from all schools has been submitted.

## School Mean against State Mean^



## School Mean as percentile against SFO percentile range^



# Parent Opinion

School no: 2790

School name: Strathmerton Primary School

Explanation: A self-completion questionnaire to obtain parents' opinions of the school. Parents rated a number of statements using a scale where 1=strongly disagree & 7=strongly agree. The statements were grouped into the following categories.

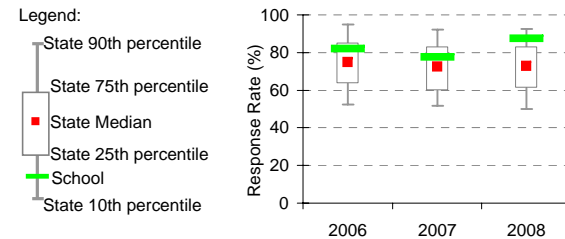
Source of data: Data scanned from questionnaires completed by parents.

Variable No.	Name	Year	School mean	State Primary median
1	School Improvement	2006	5.28	5.71
		2007	6.00	5.75
		2008	5.74	5.74
2	Approachability	2006	5.28	5.81
		2007	6.19	5.82
		2008	5.86	5.83
3	Teacher Morale	2006	5.05	5.82
		2007	6.21	5.86
		2008	5.97	5.85
4	Parent Input	2006	5.06	5.59
		2007	6.17	5.62
		2008	5.46	5.62
5	Stimulating Learning	2006	5.30	5.81
		2007	6.19	5.84
		2008	5.91	5.84
6	Behaviour Management	2006	4.86	5.51
		2007	5.92	5.54
		2008	5.38	5.55
7	Reporting	2006	5.25	5.45
		2007	5.80	5.51
		2008	5.92	5.56

Variable No.	Name	Year	School mean	State Primary median
8	Learning Focus	2006	5.30	5.71
		2007	5.98	5.72
		2008	5.85	5.73
9	Transitions	2006	5.40	5.72
		2007	5.98	5.76
		2008	5.77	5.79
10	Extra Curricula	2006	4.56	5.07
		2007	5.72	5.17
		2008	5.71	5.19
11	Homework	2006	4.76	5.23
		2007	5.51	5.23
		2008	5.48	5.28
12	General Satisfaction	2006	5.33	5.87
		2007	5.97	5.88
		2008	5.88	5.91
13	Student Safety^	2006	4.40	5.13
		2007	5.29	5.12
		2008	4.99	5.20
14	Classroom Behaviour^	2006	3.37	4.15
		2007	4.18	4.18
		2008	4.04	4.20

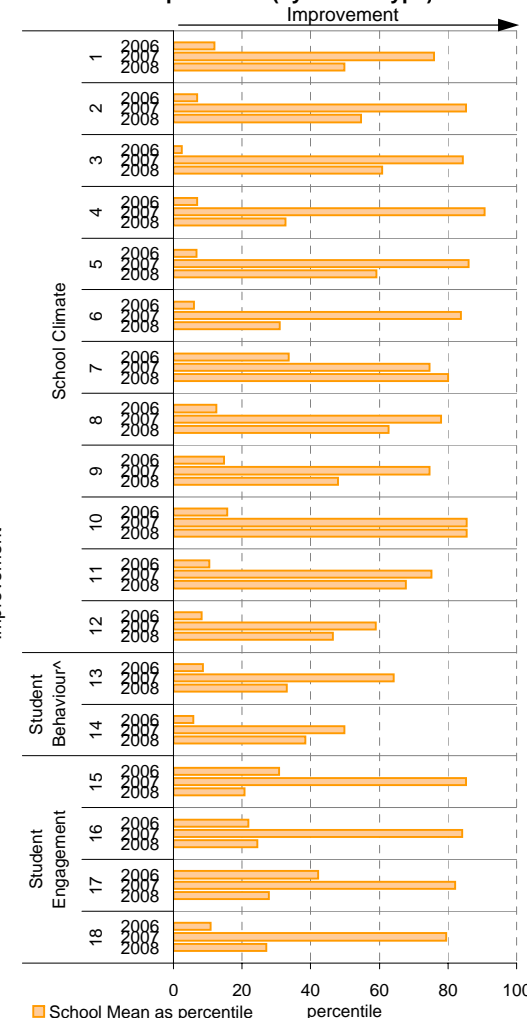
Variable No.	Name	Year	School mean	State Primary median
15	Connectedness to Peers	2006	5.69	5.83
		2007	6.09	5.83
		2008	5.64	5.85
16	Student Motivation	2006	5.42	5.66
		2007	6.07	5.69
		2008	5.49	5.72
17	Social Skills	2006	5.72	5.76
		2007	6.01	5.78
		2008	5.66	5.81
18	School Connectedness	2006	5.49	5.83
		2007	6.08	5.85
		2008	5.71	5.86

## School response rate\*\* against Primary school distribution

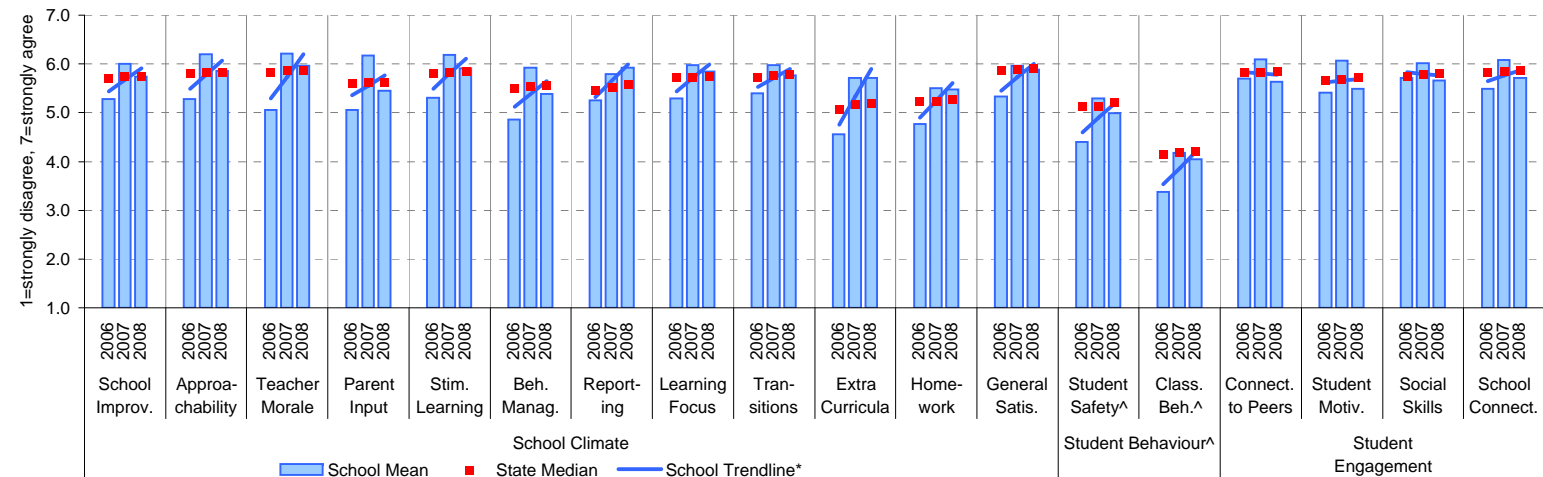


Year	No. of respondents	No. invited	Response Rate
2006	36	44	81.8%
2007	31	40	77.5%
2008	35	40	87.5%

## School Mean as percentile (by school type)



## School Mean against Primary State Mean



Notes: \* The school trendline is plotted when there is data for each calendar year.

^^ Benchmarks available for Primary, Secondary, Pri/Sec, Special and SDS schools.

\*\* If there were 6 or less respondents, table data is not shown for confidentiality reasons. If there were 3 or less respondents, graph data is not shown for confidentiality reasons.

^ Parents' responses to all negatively phrased questions have been reversed for reporting purposes. Across all variables, the higher the score or percentile rank, the more positive parents' perceptions.

Produced by Data, Outcomes and Evaluation Division, DEECD

# Staff Opinion

School no: 2790

School name: Strathmerton Primary School

Explanation: A self-completion questionnaire to obtain the staff's opinions of the school. The survey was administered online using the School Organisational Health Questionnaire.

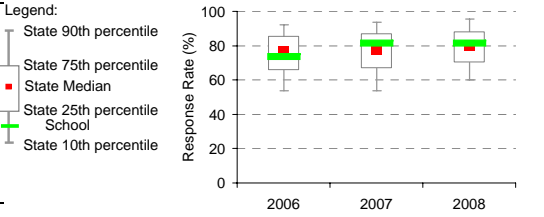
Source of data: Data transmitted from school staff to DEECD via an online survey application.

Variable No.	Name	Year	School mean	State Primary median
1	Individual Morale	2006	83.0	75.6
		2007	82.8	76.8
		2008	80.5	78.1
2	School Morale	2006	90.4	78.1
		2007	86.2	79.2
		2008	80.0	80.8
3	Supportive Leadership	2006	88.6	80.0
		2007	90.0	80.6
		2008	78.5	82.2
4	Role Clarity	2006	86.4	79.6
		2007	88.5	80.1
		2008	76.9	81.3
5	Professional Interaction	2006	90.3	80.7
		2007	88.5	81.9
		2008	79.1	83.2
6	Participative Decision-Making	2006	86.4	75.1
		2007	83.2	76.3
		2008	70.7	77.4
7	Goal Congruence	2006	90.9	81.7
		2007	92.7	82.6
		2008	84.6	83.7

Variable No.	Name	Year	School mean	State Primary median
8	Appraisal & Recognition	2006	84.1	71.6
		2007	86.9	73.1
		2008	73.7	75.0
9	Professional Growth	2006	85.0	74.2
		2007	85.0	76.0
		2008	78.8	76.9
10	Curriculum Coordination	2006	84.8	75.0
		2007	83.1	75.6
		2008	78.5	77.9
11	Effective Discipline Policy	2006	92.0	79.9
		2007	91.3	80.9
		2008	78.5	82.0
12	Student Orientation	2006	95.2	86.1
		2007	90.0	86.6
		2008	84.3	87.5
13	Student Motivation	2006	81.4	76.8
		2007	82.0	77.9
		2008	73.3	79.5
14	Student Decision-Making	2006	80.7	69.4
		2007	79.0	71.3
		2008	61.1	72.9

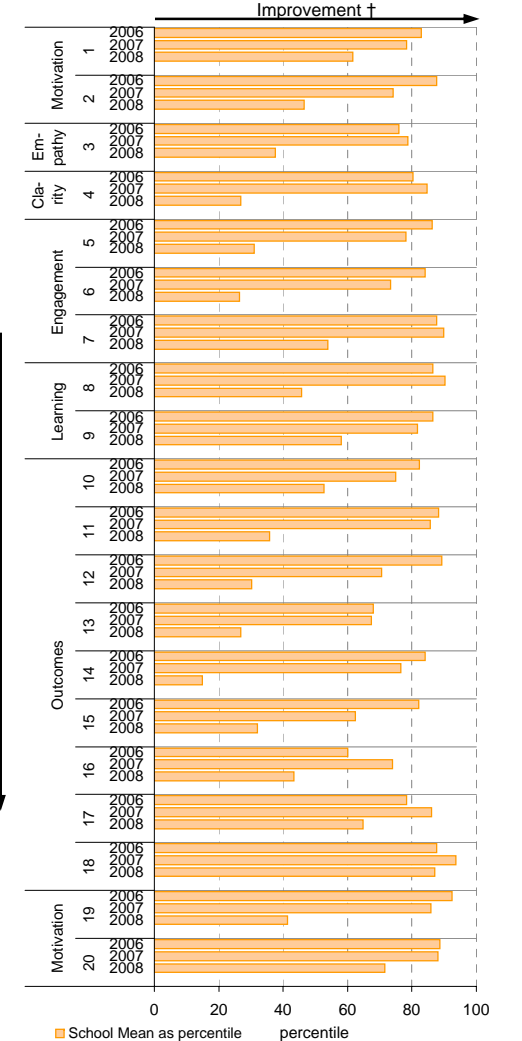
Variable No.	Name	Year	School mean	State Primary median
15	Learning Environment	2006	89.3	81.3
		2007	85.0	82.5
		2008	80.6	84.1
16	Student Misbehaviour	2006	17.9	21.7
		2007	13.3	21.5
		2008	22.2	20.0
17	Classroom Misbehaviour	2006	10.0	13.8
		2007	7.8	13.3
		2008	10.6	12.6
18	Excessive Work Demands	2006	25.6	42.9
		2007	20.2	43.2
		2008	25.0	41.7
19	Individual Distress	2006	8.5	21.6
		2007	11.5	21.1
		2008	21.5	20.0
20	School Distress	2006	13.2	28.8
		2007	12.7	28.3
		2008	18.9	26.7

## School response rate\*\* against Primary school distribution

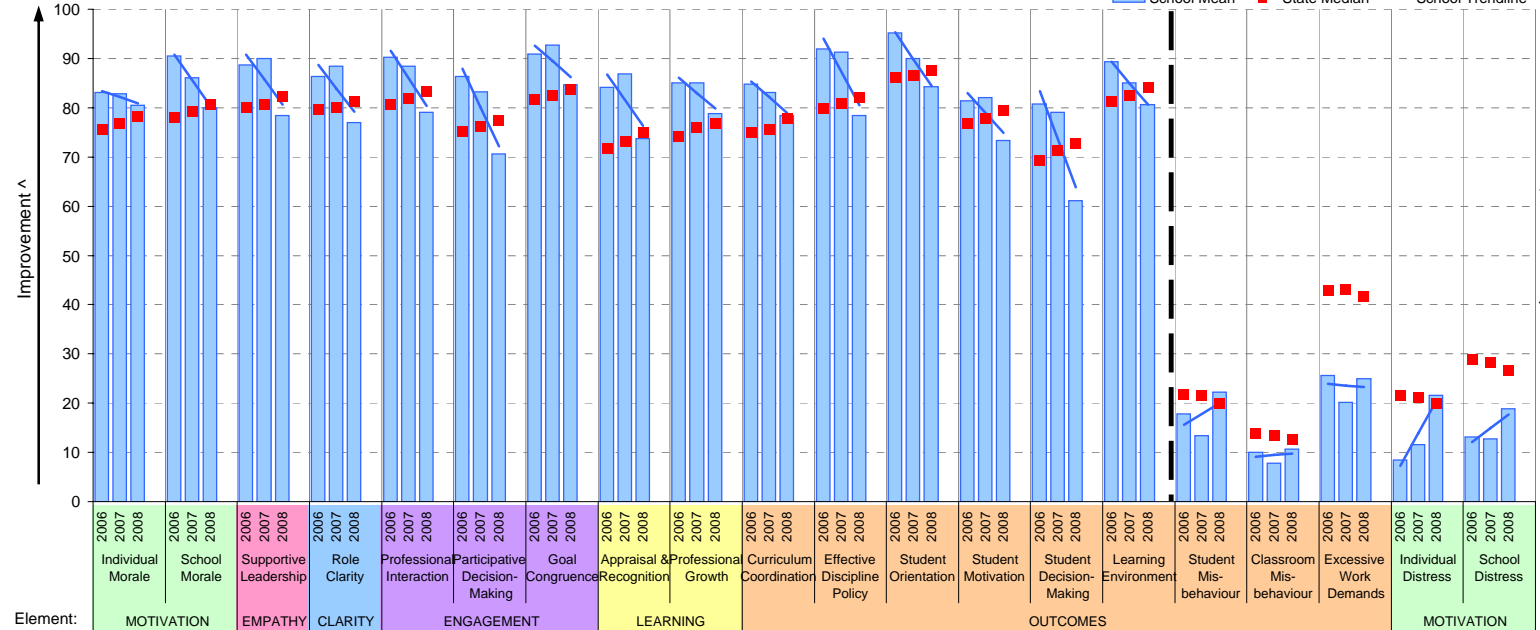


Year	No. of respondents	No. invited	Response Rate
2006	11	15	73%
2007	13	16	81%
2008	13	16	81%

## School Mean as percentile (by school type)



## School Mean against Primary State Median



Notes: \* The school trendline is being trialled. It is only plotted when there is data for each calendar year.

\*\* If there were 6 or less respondents, table data is not shown for confidentiality reasons. If there were 3 or less respondents, graph data is not shown for confidentiality reasons.

^ The higher the school mean, the more positive the outcome for variables 1 to 15. The lower the school mean, the more positive the outcome for variables 16 to 20.

† The higher the school percentile, the more positive the outcome for all variables.

^^ Benchmarks are available for Primary, Secondary, Pri/Sec, Special & SDS schools.

# Performance & Development Culture (P&DC)<sup>††</sup>

**NEW**

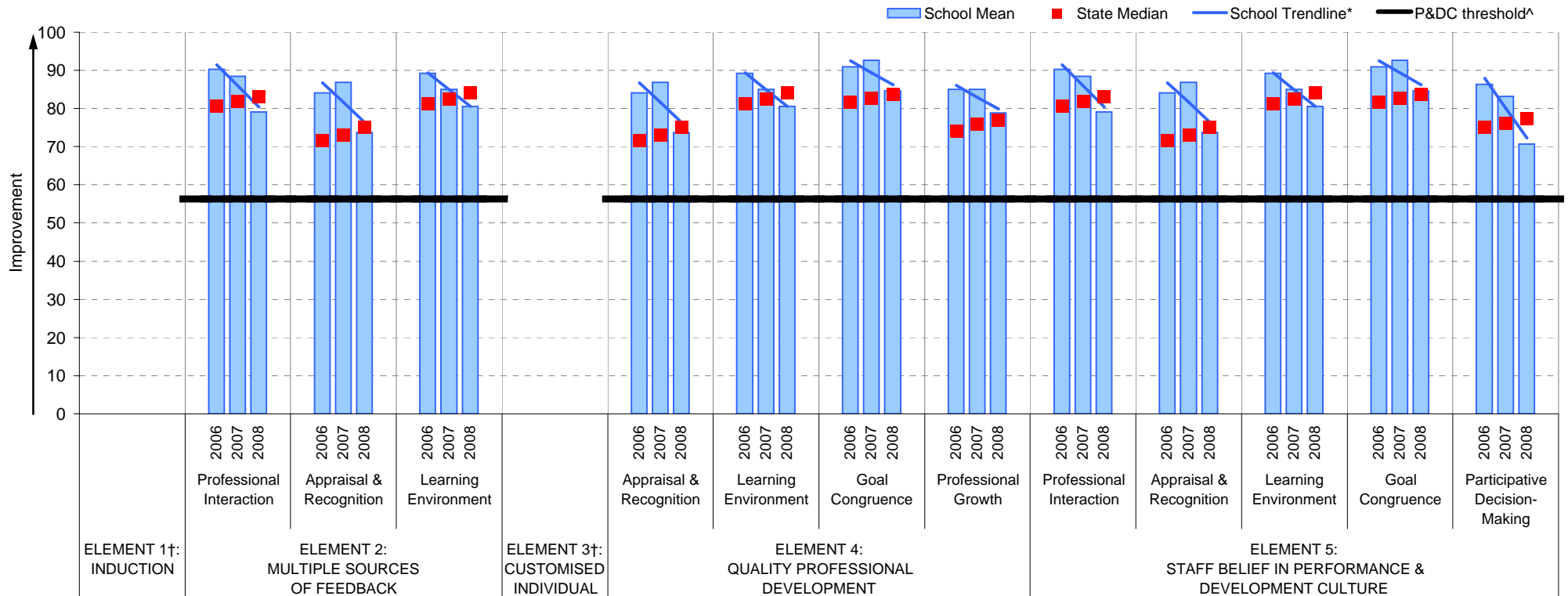
**School no:** 2790

**School name:** Strathmerton Primary School

**Explanation:** The data on this page refers to the Staff Opinion Survey.

**Source of data:** Data transmitted from school staff to DEECD via an online survey application.

## School Mean against Primary State Median



### Notes:

†† An assessment of the correlation between the P&DC Questionnaire and the Staff Opinion Survey was undertaken using data from Victorian Government schools that completed both surveys 2005 to 2007 (ie. 699 schools). This led to the identification of the components of the Staff Opinion Survey that could be used to assist schools with the ongoing monitoring of their performance and development culture. Refer to the P&DC website for further information: <http://www.education.vic.gov.au/management/schoolimprovement/panddc/default.htm>. For numerical results relating to the above graph, refer to the Staff Opinion Survey page in this report.

† Note that there is no significant correlation between the Staff Opinion Survey and P&DC elements 1 (Induction) and 3 (Customised Individual Development Plan).

^ The P&DC threshold was derived from the P&DC Questionnaire 'percent favourable' methodology where a school is considered at the standard of accreditation when their Element score is at least 75% favourable (ie. at least 75% of staff selected the top two response categories in the P&DC Questionnaire).

\* The school trendline is only plotted when there is data for each calendar year.

\*\* If there were 3 or less respondents, graph data is not shown for confidentiality reasons.

^^ Benchmarks are available for Primary, Secondary, Pri/Sec, Special & SDS schools.

# Staff Sick Leave

**School no:** 2790

**School name:** Strathmerton Primary School

**Explanation:** The number of non-certificated and total sick leave days taken per staff member. A detailed explanation on how staff sick leave is calculated is provided at: [education.vic.gov.au/management/schoolimprovement/performance/performancefaq.htm](http://education.vic.gov.au/management/schoolimprovement/performance/performancefaq.htm).

**Source of data:** Human Resources Management System (HRMS)^.

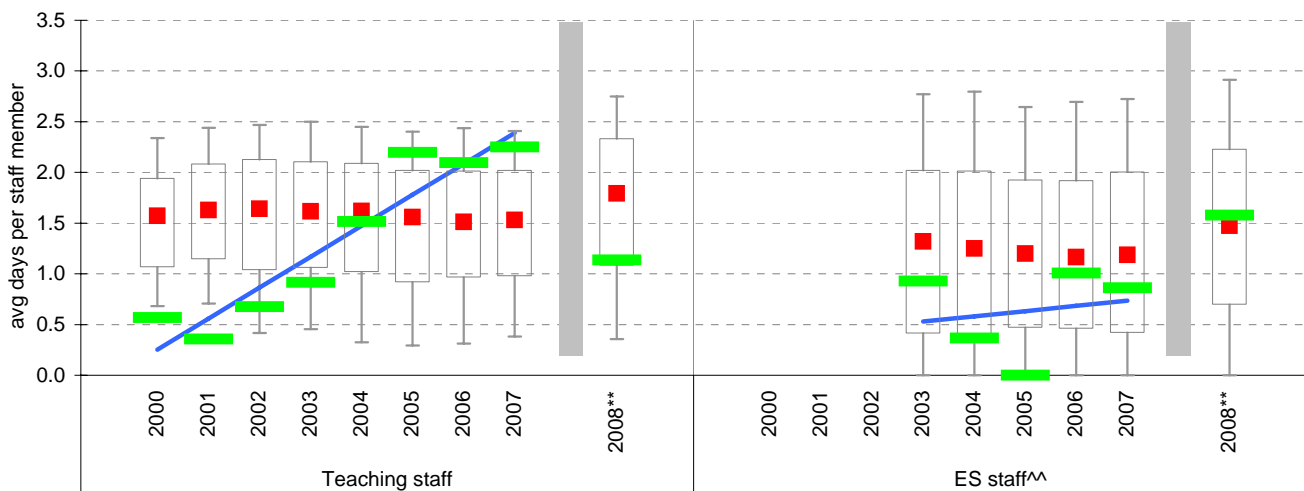
Non-Certificated sick leave days per staff member^

Staff Type	2000	2001	2002	2003	2004	2005	2006	2007	2008**	2008 State Median**
Teacher	0.57	0.36	0.68	0.92	1.52	2.20	2.09	2.25	1.14	1.79
ES^^					0.37	0	1.01	0.86	1.58	1.47

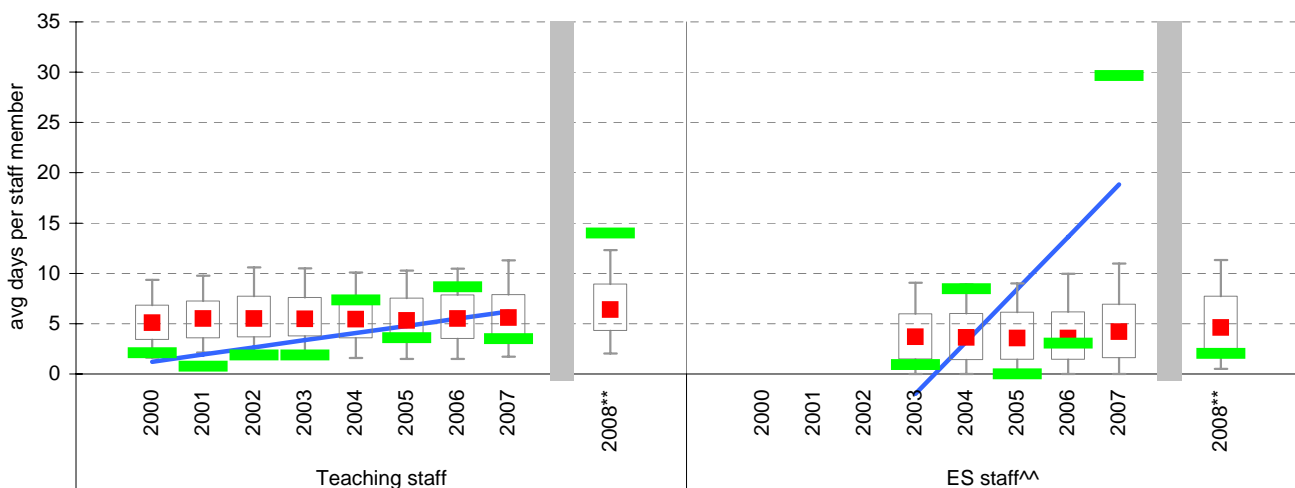
Total sick leave days per staff member^

Staff Type	2000	2001	2002	2003	2004	2005	2006	2007	2008**	2008 State Median**
Teacher	2.11	0.76	1.86	1.89	7.35	3.58	8.67	3.50	14.00	6.40
ES^^					8.46	0	3.04	29.65	2.05	4.63

## NON-CERTIFICATED sick leave

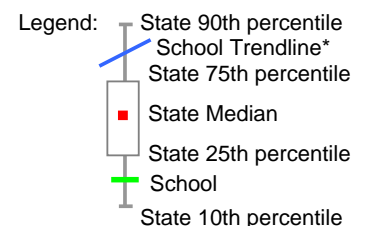


## TOTAL sick leave



### Notes:

- \* The school trendline is only plotted when there is data for each calendar year.
- \*\* The way in which sick leave data are calculated changed in 2008. As such, data from 2008 cannot be compared with previous years.
- ^ There may be some discrepancy between the results from CASES21 and those from HRMS. The latter are considered to be more accurate.
- ^^ Data for ES (Education Support) staff is only available from 2003. In previous versions of this report, ES staff were known as SSO staff.



# Teaching Staff Retention

**School no:** 2790

**School name:** Strathmerton Primary School

**Explanation:** The retention rate of teaching staff is determined by matching staff payroll records for the last pay in June of one year (Year A), to the last pay in June of the following year (Year B).

**Source of data:** Human Resources Management System (HRMS).

## Teaching Staff\*

Year A	Year B	Number of Teaching Staff in Year A	Number of Teaching Staff retained in Year B	Teaching Staff Retention Rate	Statewide Average
2005	2006	9	7	78%	87%
2006	2007	11	8	73%	86%
2007	2008	11	9	82%	84%

Of the 9 teaching service staff at June 2005 (including those on leave without pay), 7 or 78% were still at the school at June 2006. This figure across all Government schools was 87%.

Of the 11 teaching service staff at June 2006 (including those on leave without pay), 8 or 73% were still at the school at June 2007. This figure across all Government schools was 86%.

Of the 11 teaching service staff at June 2007 (including those on leave without pay), 9 or 82% were still at the school at June 2008. This figure across all Government schools was 84%.

## Ongoing Teaching Staff\*\*

Year A	Year B	Number of Ongoing Teaching Staff in Year A	Number of Ongoing Teaching Staff retained in Year B	Ongoing Teaching Staff Retention Rate	Statewide Average
2005	2006	9	7	78%	91%
2006	2007	9	7	78%	90%
2007	2008	7	6	86%	88%

Of the 9 ongoing teaching service staff at June 2005 (including those on leave without pay), 7 or 78% were still at the school at June 2006. This figure across all Government schools was 91%.

Of the 9 ongoing teaching service staff at June 2006 (including those on leave without pay), 7 or 78% were still at the school at June 2007. This figure across all Government schools was 90%.

Of the 7 ongoing teaching service staff at June 2007 (including those on leave without pay), 6 or 86% were still at the school at June 2008. This figure across all Government schools was 88%.

Notes: \* Teaching staff includes Principal class, Teacher class and Instructor class. Teaching staff employed as visiting teachers, guidance officers, curriculum consultants, etc. are excluded as they are not charged to a particular school.

^ Not including fixed term staff, except for where staff had changed from ongoing in Year A to fixed term in Year B.

# Bank Balances

**School no:** 2790

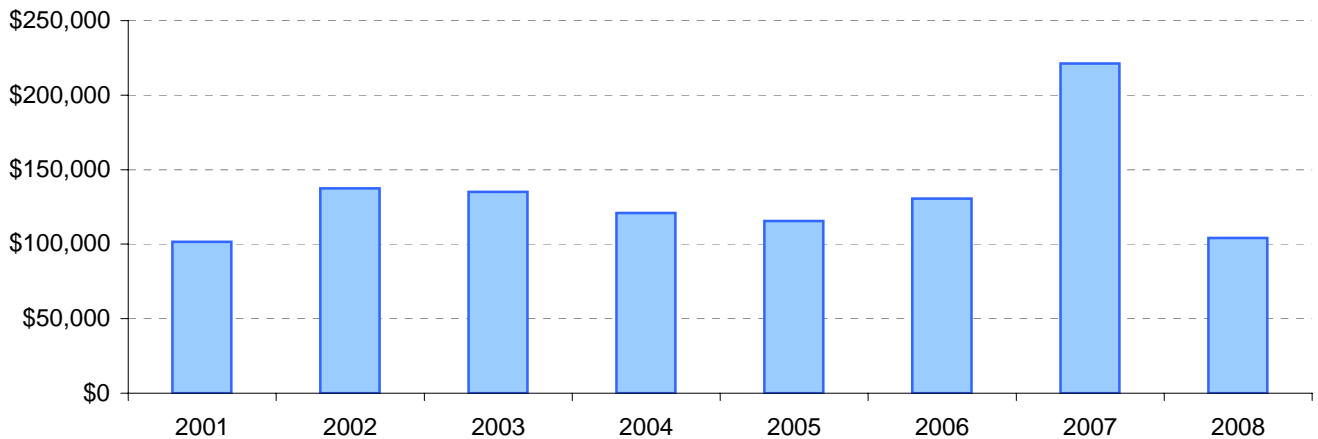
**School name:** Strathmerton Primary School

**Explanation:** Account balance figures include official and investment accounts, and are calculated by taking the opening balance at 1st January plus the total receipts at 31st December less total payments at 31st December.

## Account Balances (Official plus Investment Accounts)

2001	\$101,694	2005	\$115,465
2002	\$137,394	2006	\$130,518
2003	\$135,099	2007	\$221,284
2004	\$120,868	2008	\$104,206

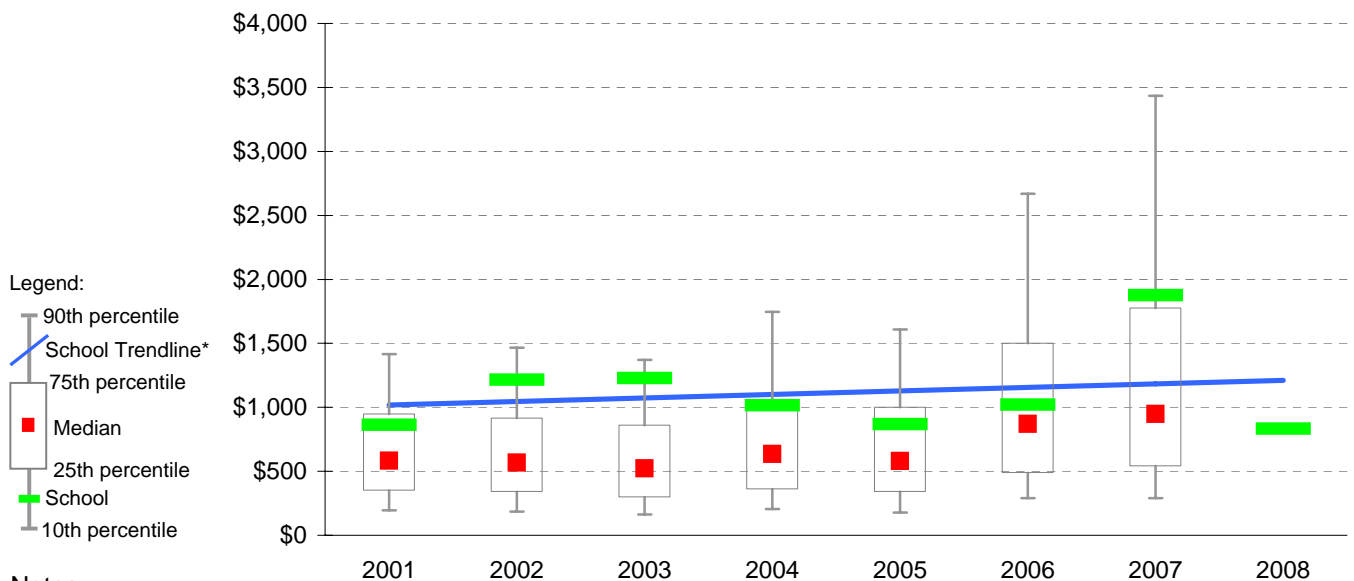
### Account Balances



## Account Balances (Official plus Investment Accounts) per student<sup>†</sup>

2001	\$862	2005	\$868
2002	\$1,216	2006	\$1,020
2003	\$1,228	2007	\$1,875
2004	\$1,016	2008	\$834

### School account balances per student enrolled in August census plotted on state Primary benchmarks<sup>^</sup>



#### Notes:

\* The school trendline is being trialled. It is only plotted when there is data for each calendar year.

† The account balance per student has been calculated to enable some comparison to be made between schools.

^ Benchmarks for primary, secondary, pri/sec, SDS, special and language schools.